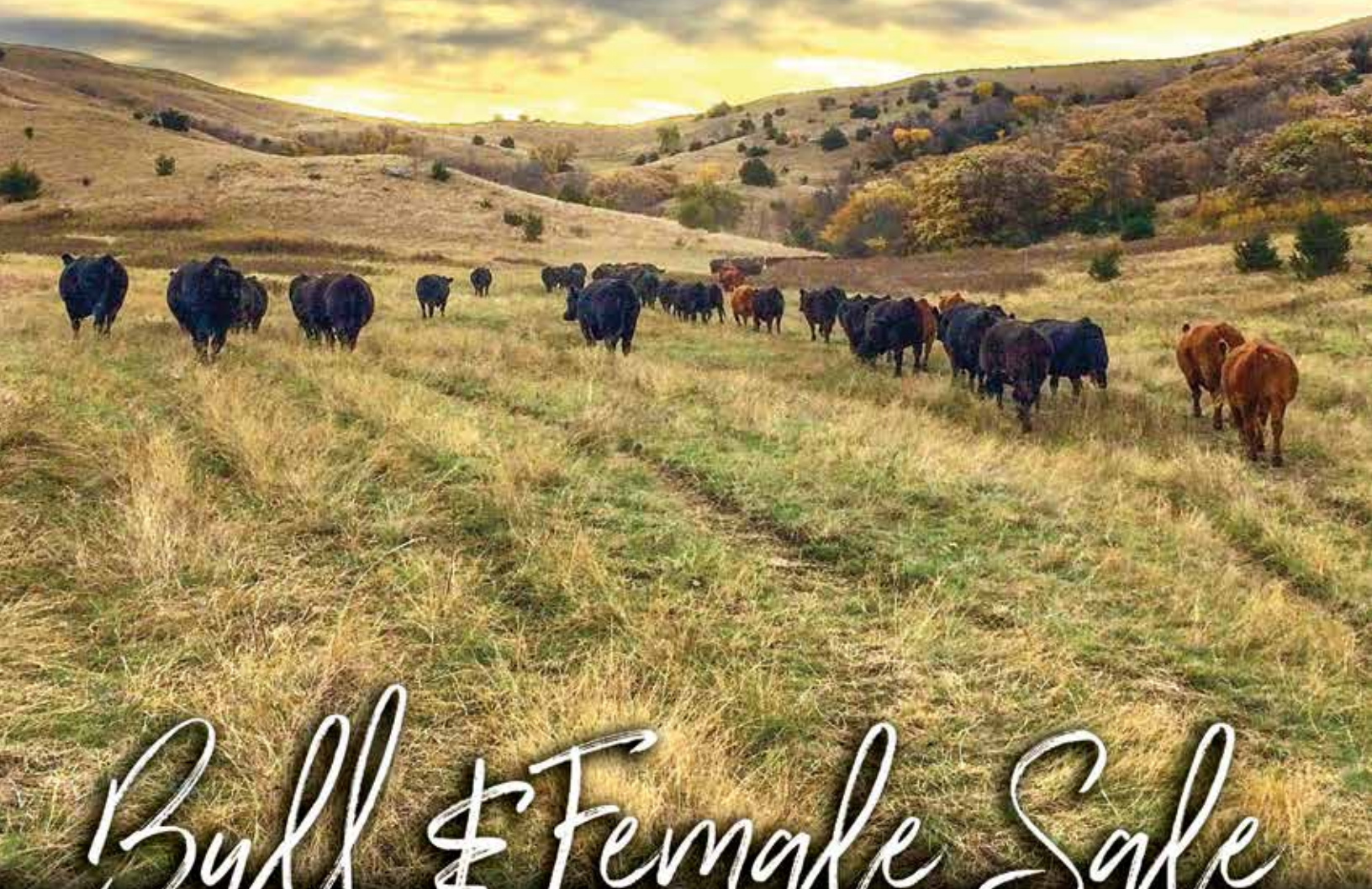




KEEP
MOVING
Forward



Bull & Female Sale
JOIN US! FRIDAY, MARCH 6TH • 1:00 PM
AT THE EICHACKER SIMMENTAL FARM • SALEM, SD

2 0 2 0

Welcome to our Bull & Female Sale

The Eichacker Simmental Family



OUR FAMILY WELCOMES YOU!

Dana, Amanda, Hunter, Taylor, Steve, Cathy, Nick, Jordan, Ellie, Judy, Greg, Becki, Bridgett, Brady, Adam



Herdsmen, Paul, Lindsay, Sawyer, Hayden and Lincoln Grace



Zac Heumiller

Welcome to the Eichacker Simmentals Production Sale. We would like to say thank you, the fact that you are even taking the time to open the catalog and read this means a lot to us here at ES. A lot of time, thought, planning, decision making and sweat equity go into a year in a seedstock operation. It's all in the name of trying to make better cattle. We have a mission statement at the American Simmental Association that states "the highest priority is to maintain services and products which bring value to ASA members' customers". What that means for us as ASA members is that in order to be successful, our customers must be successful.

To represent the cattle as accurate as possible we have made a commitment to technology. Trust me, I'm a bit old fashioned and it takes a while for this stubborn German to grasp what it can do, but we have to put trust in those that do understand what genomic testing is capable of. All our cows have genomic enhanced EPDs, it's the equivalent in some categories of having 20 calves calculated into the accuracy of the EPD. The bulls in the offering

also have genomic enhanced EPDs along with being identified as homo black & polled. New this year is the Right Choice program, this program is just being released, it helps identify individual bulls that have the genomics to excel in certain areas as identified by the logos. There's a 1-page explanation on how to interpret the program. The goal is to help make your decision easier as to what bulls have the DNA markers to take your breeding program in the direction you desire. It's just another tool for your toolbox.

Trust me, we like good looking, functional cattle as well as anyone, our goal is to incorporate genotypes or DNA with them. To put it into perspective just looking at actuals like birth weight and weaning weight can have a lot of environmental factors that can influence them. The database where EPDs derive from consider what the actuals were within herd when calculating, but also includes the influence of over 18 million head through the IGS database. Like it or not I believe science is here to stay and its going to help us make a better beef product.

After a year sabbatical, JK Angus is back with us again but only in a small way as they sold most of their bulls to a single producer. Jeff said they will be adding to the sale a handful of Black Angus bulls that will be suitable for heifers.

The majority of the ET calves offered in the sale were raised by Glen Kummer. A huge thanks to Glen and his crew for the great job they do and the extra care they are given.

Once again, the auction will be a video auction that will also be broadcast on DVAuction. The nice part of the videos is that they are available for viewing online prior to the sale, so in the comfort of your home you can have a good sneak preview of the offering. We do recommend coming early to the sale to finalize your decisions in the pens.

In our area the past 2 years have been physically challenging in agriculture, especially the livestock sector with mother nature throwing curve ball after curve ball. They say, "what doesn't kill you only makes you stronger". Good times are ahead and now is the time to get in position to reap the benefits.

Thank you for your interest in our programs, come early or stay after to enjoy some great hospitality that Cathy and her crew have prepared. If you have any questions, feel free to contact us or Jeff and his family at JK Angus.

See ya sale day!

Eichacker Simmentals & JK Angus

SALE DAY PHONES:

Videos will be available at www.eichackersimmentals.com or www.ebersale.com

Steve's Cell 605-421-1152

Paul Grace's Cell 605-261-5851

Adam Eichacker 605-421-0554

Val's Cell 612-805-7405

Jeff Kapperman 605-940-5104

LIVE BIDDING AT

DVAuction
Broadcasting Real-Time Auctions

VIDEO AUCTION ON ALL CATTLE!

• No cattle will go through a sale ring •

WELCOME

FRIDAY, MARCH 6, 2020



Friday, March 6, 2020 at 1:00 PM At Eichacker Simmentals, Salem, SD

DIRECTIONS TO SALE SIGHT: Eichacker Simmental Farm, Salem SD: Exit 368 (Canistota) on Interstate 90, go 2 miles North, Eichacker Farm is on the East side of the road. From Salem: Hwy 81 & 38 intersection, go 4 miles East and 1.5 miles South. Farm is on the East side of the road.

SCHEDULE: Cattle may be viewed at the farm any time prior to Friday, March 6, 2020.
Friday, March 6 Cattle on Display at Eichacker Simmentals
Complimentary Lunch Served 11:00 AM
Eichacker Simmental Bull & Female Sale 1:00 PM

Featuring Simmental & Red Angus Bulls & Females



Motels

Best Western U-Bar Motel, Canistota, SD 605-296-3466
Hampton Inn, Mitchell, SD 605-995-1575
Quality Inn & Suites, Sioux Falls, SD 605-336-1900

Terms of Sale

All cattle will sell under the suggested sale terms and conditions of the American Simmental Association. Terms available sale day.

Announcements

Announcements made sale day and from the block take precedence over printed material in sale catalog. Anyone attending this sale attends at their own risk. Eichacker Simmentals or any of the sale force will not be held responsible for any personal injury while attending this sale.

EPDs

All Simmental bulls have genomic enhanced EPDs.

Feeding & Delivery

We will offer to feed the bulls at no charge until April 15, 2020. At that time, they will be semen tested and delivered free of charge up to 300 miles. We will assist in making the most economical arrangements possible beyond that. We are not responsible for any injury or death to the bulls while in our care.

Insurance

Insurance will be available, details will be announced sale day.

Health

All bulls have been tested negative for BVD/PI. All cows are Johnes free. All genetic defect testing has been completed.

Sale Management

Sale Managed by Eberspacher Enterprises, Inc.

Val & Lori Eberspacher • sales@ebersale.com • www.ebersale.com
EE Office 507-532-6694
Val Eberspacher Cell 612-805-7405



Guest Breeder: JK ANGUS
Jeff & Sue Kapperman
605-363-3302 Home
605-940-5104 Cell

Auctioneer

Col. Tracy Harl 402-461-3575

Marketing Representatives

Val Eberspacher, EE Sales 612-805-7405
Colton Buus, The Register 605-214-3532
Jim Scheel, Cattle Business Weekly 605-545-1521
Randy Rasby, Livestock Plus 308-539-6195
Jeff Kapperman, Tri-State Neighbor 605-940-5104
Dustin Carter, Special Assignment 712-898-9972
Chris Effling, Special Assignment 605-769-0142
Marty Ropp, Allied Genetics 406-581-7835
Rocky Forseth, Allied Genetics 406-590-7984
Justin Dikoff, DV Auction 605-290-0635

Calving Ease Score ★ ★ ★ ★

We have put a column in with a CE Score with 1, 2, 3 or 4 stars. 1 star being harder calving and 4 stars being the easiest caving. It is just our opinion of what you could expect taking into consideration the BW, EPDs, pedigree and structure of the bull.

Semen Interest

Eichacker Simmentals will retain 1/4 semen interest in all bulls sold. Keep in mind, generally this means absolutely nothing, it only comes into play if semen is collected and sold.

Adjusted Scrotal

Actual scrotal measurements were taken on 1-24-2020, then adjusted to a year of age using each breed's own formula for adjusted scrotal measurements.

Weight Per Day of Age (WDA)

WDA is the weight of a bull on 1-24-2020 divided by the days of age.

116 Day Weight

The 116 day gain was the average daily gain from the weaning weight until 1-24-2020.

Homozygous & Heterozygous

A homozygous black bull when mated to any black cows will give you a black calf. A heterozygous black bull carries a red gene, but when mated to black cows will give you a black calf unless your black cow carries a red gene. Then you have a slight chance of getting a red calf, but neither will sire gray calves on black cows.

Improved Buying Confidence with Greater Genomic **ASSURANCE**

Access to more and better information has always been key to making wise decisions. The evolution and improvement of genetic evaluation tools too has given us an ever-clearer picture of the true genetic makeup of cattle and thus a better view of the value proposition. RightMate, powered by Top Genomics LLC is taking the evaluation of genetics and genomics one giant step further. By combining specific genomic information with the long-proven value of EPDs, this new advancement in technology improves our depth and precision when evaluating the actual ability to transmit value and profit.

The 3 Accreditation Logos below are designed to simplify bull selection and improve buyer confidence by more accurately describing the genetics offered and by reducing risk. What this means to you as a customer is a much greater assurance that you are getting both what you want and need from the genetics you purchase. What it means to your seedstock provider is access to RightMate technology that simply sets them apart from the rest of the industry.



ACCREDITED GENOMIC PLUS – For the majority of producers who simply need consistent and balanced genetic improvement, without genomic setbacks, G+ Accredited bulls should be on your list for premium purchase. These sires will absolutely move you forward for both cost reduction and income producing traits and substantially reduce risk when compared to all other evaluation programs. It's simple, the right genes are in these bulls to help secure a profitable future and they have great EPDs to match!



ACCREDITED CALVING EASE – Simply find bulls with the ACE logo for third party Accredited, secure Calving Ease bulls. Though we have had tools in the past to assist in choosing heifer bulls, we've never had one nearly this effective. The reduced risk that comes with this genomic certification will simply make your decisions easier and your heifer calving season more successful. Purchase special purpose ACE bulls with confidence. They will deliver consistent and predictable calving ease.



ACCREDITED TERMINAL MATE – Just like an ATM machine makes it simpler to access your cash, the ATM Logo highlights bulls accredited to generate extra cash income as soon as your next calf crop! These bulls are meant specifically to use only on mature cows and for the purpose of adding performance, pay weight and end product value to market.

MARTY ROPP 406-581-7835

RightMate
powered by TOP GENOMICS

Genomic Enhanced EPDs & Right Choice



Science is in warp speed in the cattle industry. The world of DNA and Genomics has made huge strides in accuracy and acceptability the last few years in our quest to make a better and more predictable product. It was a huge investment a couple of years ago to DNA test our whole cow herd. You may ask "why" did we do it? It's simple, we believe in providing the most accurate information we can to make breeding decisions, not only for us in future mating decisions but for you our commercial customers to find the genetic package to move your herd in the direction you want. Having Genomic Enhanced EPD's increases accuracy in all traits to

the equivalent of reporting 20 progeny in some traits. We have then followed up with providing Genomic Enhanced EPD's for all the Simmental bulls in the offering. This will help take some of the guess work out of purchasing young unproven herd bulls. The added bonus of Genomic testing is parent verification and we are once again happy to say all the bulls and heifers are exactly who we say they are.

For generations we have all been trained to look for the low birth weight and heavy adjusted 205-day weight bulls and that's how we select. Collecting the actuals like BW and WW are, and will continue to be a necessity. But there are some that believe after the actuals are turned in and EPD's calculated, the actuals should be discarded and only use EPDs. Using EPDs will let you compare cattle between herds and take the environment and management factors out of the equation.

Just when we were getting comfortable with EPDs a new program was unveiled, the Right Mate and Right Choice programs. I'm not even going to pretend I know the science behind it, other than individual markers have been identified that are very influential in various traits like birth weight, growth and maternal. Then to make it a user-friendly program that even I can understand they tied a 3-logo system to the various indicators to aid in selecting cattle to fill your needs. The preceding page has an explanation on how to use it or you can certainly give Steve a call, but you may risk being more confused after the phone call. What I will say about the Right Choice program is I had it available while writing footnotes and I felt they followed the cattle very close.

There is technology in the future that just blows my mind with doing projected matings of the cow herd (that is a conversation for another day). What this amounts to, with all of this technology it's like having tools in a toolbox, it's up to you whether you elect to use them or not.

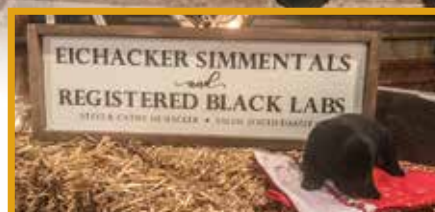
BLACK LAB PUPPIES FOR SALE!

Contact Steve for more information
605-421-1152



Born December 16, 2019
Good Hunting Parents

At the time catalog went to print, there were 3 males and 1 female available. Ready to go! First come, first serve.





WS Proclamation E202,
Sire to Lot 1 & 2

1 ES GA110-1

G+ **ATM** CE SCORE
★★★★

CE	BW	WW	YW	ADG	MCE	Milk	MWW	Stay	DOC	CW	YG	Marb	BF	REA	API	TI
13	1.0	80.9	125	.27	6	27	68	15	15.2	62.0	-.39	.29	-.077	1.30	143	85
20	35	10	5	10		10	3		5	1		5		1	10	2

REG#3623029 • BD: 2/16/19 • Homo Black Baldy Homo Polled Purebred

Adj BW	Adj WW	Adj YW
107	682	1252
Adj Scrotal	WDA	116 Day Gain
39.4	3.38	3.58

Pedigree for Lots 1 & 2:

CCR Cowboy Cut 5048Z

WS Proclamation E202

WS Miss Sugar C4

Remington Lock N Load 54U

ES A110

ESU56

2 ES GA110-2

ATM CE SCORE
★★★

CE	BW	WW	YW	ADG	MCE	Milk	MWW	Stay	DOC	CW	YG	Marb	BF	REA	API	TI
11	.9	79	122	.27	5	27	67	15	13.4	56.2	-.33	.23	-.081	1.00	138	82
	30	10	10	10		10	4		15	1		10		15	15	3

REG#3623030 • BD: 2/12/19 • Homo Black Baldy Homo Polled Purebred

Adj BW	Adj WW	Adj YW
101	690	1280
Adj Scrotal	WDA	116 Day Gain
43.5	3.44	3.71



What a trio of brothers these 3 are. The A110 cow has solidified herself as our go to donor with this pen of bulls. This will be two years in a row we have led off the catalog with A110 sons. So far, whatever sire we have used, it worked. That kind of cow doesn't come around very often. I had a very good cattleman tell me once I would rather have the poorest calf out of a consistent flush than the best calf out of a poor flush. All three purebreds are homo black and polled. The two Proclamations are like pees in a pod, phenotypically I don't know which I would select as of today, probably the biggest difference is how they came back after the genomic enhanced EPDs; A110-1 shows a little more calving ease and has a G+ endorsement also. The Cowboy Cut is a full brother to the 2 bulls Craig Wilken selected last year and are working well for him. The disposition on all three is excellent, so to get a good picture was difficult.

Lots 1-3: Trio of Sons from ES A110

3

ES GA110-3



CE SCORE



CE	BW	WW	YW	ADG	MCE	Milk	MWW	Stay	DOC	CW	YG	Marb	BF	REA	API	TI
8	2.3	83	121	.24	3	22	64	19	14.2	41.1	-.45	.25	-.097	1.05	142	83
		5	10	25			10	30	10	10		10		10	10	3

Adj BW	Adj WW	Adj YW
86	622	1192
Adj Scrotal	WDA	116 Day Gain
38.7	3.21	3.58

Triple C Singletary S3H
CCR Cowboy Cut 5048Z
CCR Ms. 4045 Time 7322T
Remington Lock N Load 54U
ES A110
ESU56

REG#3623031 • BD: 2/25/19 • **Homo Black Baldy Homo Polled Purebred**



ES FA110-1, Maternal Brother to Lot 1 & 2, Full Brother to Lot 3



ES FA110-2, Maternal Brother to Lot 1 & 2, Full Brother to Lot 3



ES FA110-3, Maternal Brother to Lot 1, 2 & 3



ES FA110-4, Maternal Brother to Lot 1, 2 & 3



CCR Cowboy Cut 5048Z, Sire to Lot 3

SIMMENTAL BULLS

4 ES GZ33

CE SCORE



CE	BW	WW	YW	ADG	MCE	Milk	MWW	Stay	DOC	CW	YG	Marb	BF	REA	API	TI
14	-2	80	125	.28	8	29	69	15	13.9	51.2	-.47	.30	-.116	1.09	149	88
10	15	10	5	10	10	5	2		10	1		5		10	4	1

REG#3623159 • BD: 3/14/19 • Hetero Black Homo Polled Purebred

CCR Cowboy Cut 5048Z
 WS Proclamation E202
 WS Miss Sugar C4
 Remington Lock N Load 54U
 ES Z33
 ES W11

Adj BW	Adj WW	Adj YW
89	651	1311
Adj Scrotal	WDA	116 Day Gain
39.7	3.59	4.14



Here's one where the stars are aligning up awfully nice as the data all comes together. There was a wow factor when he came in the picture pen. Then as we are putting all the numbers together, the fire gets a little hotter. He is the #2 gaining bull since weaning and #4 WDA individual. He has those great spread ratios, BW 105, WW 107, YW 116, like a fine wine, he gets better with time. Talk about balance, Top 20% of the breed in 14 categories, that's the most of any in the offering. So, it makes a lot of sense he would carry 2 markers on the Right Choice program.



ES E58, Maternal Sister

5 ES G480B-1

CE SCORE



CE	BW	WW	YW	ADG	MCE	Milk	MWW	Stay	DOC	CW	YG	Marb	BF	REA	API	TI
11	2.1	87	137	.31	7	22	66	16	17.1	53.7	-.37	.41	-.089	1.02	141	86
		2	1	3	35		5		2	1	15	30	15	3	20	2

REG#3623019
BD: 3/12/19

Homo Black
 Homo Polled
 3/4 SM 1/4 AN

CCR Cowboy Cut 5048Z
 WS Proclamation E202
 WS Miss Sugar C4
 Remington Lock N Load 54U
 W/C Miss Werning 480B
 Bushs Big Blackbird 7880

Adj BW	Adj WW	Adj YW
114	606	1229
Adj Scrotal	WDA	116 Day Gain
41.6	3.35	3.92



ES D24, Maternal Sister

One of the highest performing Proclamation sons we have in the sale. He is the #3 gaining bull since weaning. If you like them big and powerful, you ought to see his mother, she is sound, square made yet attractive. A maternal brother was purchased by Quandt Brothers two years ago. The numbers say he should sire high growth cattle with a big ribeye.

6 ES GZ40

CE SCORE



CE	BW	WW	YW	ADG	MCE	Milk	MWW	Stay	DOC	CW	YG	Marb	BF	REA	API	TI
13	1.0	80	120	.25	7	31	71	17	16.0	49.5	-.31	.15	-.069	.93	140	81
35		10	10	25		3	1	35	5	3	30	30	10	20	10	

REG#3623161 • BD: 3/16/19
 Homo Black Hetero Polled
 3/4 SM 1/4 AN

CCR Cowboy Cut 5048Z
 WS Proclamation E202
 WS Miss Sugar C4
 ES Power Up XS37
 ES Z40
 ESU21

Adj BW	Adj WW	Adj YW
91	665	1097
Adj Scrotal	WDA	116 Day Gain
36.8	3.12	2.72

This Proclamation son offers some nice growth numbers in a sensible size package. Ratioed 109 for WW and nice WW & YW EPDs to back it up. There's a lot of maternal genetics in this pedigree from the C4 cow on the top side to Power Up and the 1st two generations of cows on the bottom.

7 ES GD123

CE SCORE



CE	BW	WW	YW	ADG	MCE	Milk	MWW	Stay	DOC	CW	YG	Marb	BF	REA	API	TI
12	.5	73	114	.25	6	25	62	16	13.4	46.6	-.35	.25	-.088	.88	142	80
25	25	30	20	20	35	25	20		15	2		10			10	10

REG#3623082 • BD: 3/9/19

Hetero Black Brockle
Homo Polled Purebred

A couple of years ago I pegged a bull as the Tom Brady of the bull pen. Adam asked if I was going to do it again this year. This guy kind of hit me the same way, so we'll call him "Mahome" in honor of Patrick Mahome and his Super Bowl Champions, Kansas City Chiefs. He's like the Chief's, might start out a little slow, but finishes strong and is a winner in the end. In his EPD profile he hits the top 25% of the breed in 11 categories.



CCR Cowboy Cut 5048Z
WS Proclamation E202
WS Miss Sugar C4
Remington Lock N Load 54U
ES D123
HS Look At Me X381N

Adj BW	Adj WW	Adj YW
101	607	1161
Adj Scrotal	WDA	116 Day Gain
40.4	3.08	3.49

8 ES GB75

CE SCORE



CE	BW	WW	YW	ADG	MCE	Milk	MWW	Stay	DOC	CW	YG	Marb	BF	REA	API	TI
10	2.5	82	123	.26	5	26	67	20	13.2	65.9	-.28	.14	-.064	1.10	140	79
		10	10	15		15	4	15	15	1		20		10	15	10

REG#3623057 • BD: 3/16/19

Homo Black Homo Polled
Purebred

One of the main reasons we used Proclamation was the cow he is out of, Miss Sugar C4. In our mind she is ideal, then add our T51 cow on the bottom and now you have something, stacking pedigrees with great mama cows. So, what's the moral of the story.... keep every female he sires!

CCR Cowboy Cut 5048Z
WS Proclamation E202
WS Miss Sugar C4
SS Ebony's Grandmaster
ES B75
EST51

Adj BW	Adj WW	Adj YW
107	668	1210
Adj Scrotal	WDA	116 Day Gain
38.8	3.36	3.41

9 ES GA40

CE SCORE



CE	BW	WW	YW	ADG	MCE	Milk	MWW	Stay	DOC	CW	YG	Marb	BF	REA	API	TI
13	2.6	87	131	.28	5	25	68	20	16.4	56.1	-.44	.16	-.091	1.26	146	84
20		2	3	10		25	3	20	2	1		20		1	10	2

REG#3623037 • BD: 4/9/19

Black Homo Polled
Purebred

Sorry, this guy slipped through the cracks and should have been in the picture pen having a WW ratio of 117. He also showcases some impressive EPDs having a ribeye in the top 1% of the breed and WW & YW in the top 2% & 3% respectively.

CCR Cowboy Cut 5048Z
WS Proclamation E202
WS Miss Sugar C4
Ellingson Legacy M229
ES A40
ESU21

Adj BW	Adj WW	Adj YW
114	714	1160
Adj Scrotal	WDA	116 Day Gain
40.1	3.34	2.80

10 ES GZ23

CE SCORE



CE	BW	WW	YW	ADG	MCE	Milk	MWW	Stay	DOC	CW	YG	Marb	BF	REA	API	TI
13	1.4	76	114	.24	7	23	61	18	4.6	29.4	-.16	.33	-.030	.54	139	77
35		15	20	35		35		20	25						20	20

REG#3623157
BD: 4/6/19Homo Black
Homo Polled
5/8 SM 3/8 AN

CCR Cowboy Cut 5048Z
ES Epic EB94
ES B94
GDAR Game Day 449
ES Z23
ES X59

Adj BW	Adj WW	Adj YW
100	657	1143
Adj Scrotal	WDA	166 Day Gain
42.9	3.29	3.06

Look at this guy's toolbox, I think he may have a set of metrics also!! He had a WW ratio of 108. His dam is a hard working Game Day daughter who brings home a good one every year. Each year we score her udder above average. Be sure to note his 2 Right Choice logos.



ES D34, Maternal Sister

11 ES GA11-1

CE SCORE



REG#3623026

BD: 3/24/19

Homo Black

Homo Polled Purebred

Adj BW	Adj WW	Adj YW
80	663	1088
Adj Scrotal	WDA	116 Day Gain
37.2	3.07	2.67

CE	BW	WW	YW	ADG	MCE	Milk	MWW	Stay	DOC	CW	YG	Marb	BF	REA	API	TI
13	2.6	89	127	.24	9	25	70	17	16.7	41.7	-.43	.29	-.097	1.01	149	88
15		1	4	25	10	25	2		2	10		5		15	4	1

**12 ES GA11-2**

CE SCORE



Adj BW	Adj WW	Adj YW
98	648	1197
Adj Scrotal	WDA	116 Day Gain
36.6	3.22	3.45

CE	BW	WW	YW	ADG	MCE	Milk	MWW	Stay	DOC	CW	YG	Marb	BF	REA	API	TI
15	2.3	89	123	.22	10	15	59	16	14.6	39.1	-.48	.18	-.100	1.09	142	84
5		2	10		3		30		10	10		15		10	10	2

REG#3623027 • BD: 2/13/19 • Homo Black Homo Polled Purebred



Pedigree for Lots 11-12:

Triple C Singletary S3H

CCR Cowboy Cut 5048Z

CCR Ms. 4045 Time 7322T

Mr. NLC Upgrade U8676

GLS Ashley A11

GLS Miss Answer X54

This pair of bulls trace back to the Ashley A11 cow that we purchased 1/2 interest in back in 2014 from Grass/Lunning. Tom Hook had asked me to tag along and watch his backside as we judged the Denver pen show that year. When Ashley came into the ring, I was star struck. She was impressive the way she carried herself around that sand ring with elegance. Tom's comment was "you can have phenotype and genotype in the same package". My prediction is GA11-1 offers a little more calving ease, hence the G+ marker but still qualified for the ATM like his full brother, who is the high performance of the two. Should make some nice replacements, we are fans of our Cowboy Cut females.

13 ES G315A

CE SCORE



CE	BW	WW	YW	ADG	MCE	Milk	MWW	Stay	DOC	CW	YG	Marb	BF	REA	API	TI
9	2.5	87	127	.25	5	19	62	17	8.4	41.1	-.17	.43	-.047	.58	140	83
		2	4	25			15	30		15		25			20	4

REG#3623018 • BD: 3/14/19 • **Homo Black Homo Polled 5/8 SM 3/8 AN**

CCR Cowboy Cut 5048Z
 ES Epic EB94
 ES B94
 R&R Chamberlain X744
 Miss Werning 315A
 Miss Werning 9715T

Adj BW	Adj WW	Adj YW
100	645	1186
Adj Scrotal	WDA	116 Day Gain
40.7	3.32	3.41



If you like 'em flashy, this guy will make you stop and take a second look. His dam, 315A, is a big powerful Chamberlain daughter that was our selection out of the W/C program several years ago. We then came back on her with ES Epic, the cool bull selected by Wayward Hills Farm two years ago. He ratioed 106 for WW and 104 for YW.



ES Epic EB94, Sire

14 ES GW59

CE SCORE



CE	BW	WW	YW	ADG	MCE	Milk	MWW	Stay	DOC	CW	YG	Marb	BF	REA	API	TI
9	1.8	77	114	.23	4	29	67	21	6.2	38.5	-.24	.27	-.048	.76	135	75
		15	20			5	3	3		20				25	30	25

REG#3623129
BD: 4/11/19**Homo Black
Homo Polled
5/8 SM 3/8 AN**

CCR Cowboy Cut 5048Z
 ES Epic EB94
 ES B94
 O C C Prototype 847P
 ES W59
 ESS55

Adj BW	Adj WW	Adj YW
102	727	1207
Adj Scrotal	WDA	116 Day Gain
35.4	3.47	3.02

My visual notes say...big ass with a lot of rib. I think I'll go with that. He is about a spitting image of his sire, ES Epic. You would never guess he's one of the younger bulls in the sale, he will rival his pen mates that are 30-60 days older especially if he keeps his ranking of being the #6 WDA bull. His 11-year-old dam has a picture perfect udder.

**15 ES GD63**

CE SCORE



CE	BW	WW	YW	ADG	MCE	Milk	MWW	Stay	DOC	CW	YG	Marb	BF	REA	API	TI
11	1.6	78	113	.22	7	20	59	16	6.8	41.5	-.17	.31	-.033	.70	140	81
		15	20		25		30		10		4				15	5

REG#3623093 • BD: 3/20/19
**Homo Black Homo Polled
Purebred**

He exhibits a lot of the same look as his sire, ES Epic. He is moderate made with a lot of width across his topline, then rolls into an explosive rear quarter. He also hit on 2 Right Choice markers. He has a baldy maternal sister in the sale, ES F46 (Lot 118).

CCR Cowboy Cut 5048Z
 ES Epic EB94
 ES B94
 LLSF Pays To Believe ZU194
 ES D63
 ESU2

Adj BW	Adj WW	Adj YW
95	611	1089
Adj Scrotal	WDA	116 Day Gain
32	2.94	3.02



ES F46, Maternal Sister

16 ES GC5

CE SCORE



CE	BW	WW	YW	ADG	MCE	Milk	MWW	Stay	DOC	CW	YG	Marb	BF	REA	API	TI
2	4.3	75	114	.25	.2	28	66	22	11.9	34.0	-.51	-.03	-.098	1.15	120	68
		15	20	25		10	5	1		35	2		10	1		

REG#3623073 • BD: 3/21/19 • Homo Black Homo Polled 3/4 SM 3/16 AN 1/16 AR

CCR Cowboy Cut 5048Z
SFI Enough Said D3
SFI Miss Too Sweet N85K
ES Surelock ZW15
ES C5
ESR82

Adj BW	Adj WW	Adj YW
111	642	1183
Adj Scrotal	WDA	116 Day Gain
35.5	3.27	3.41



If you're looking for a bull to put some meat and potatoes on a set of feeder calves, this guy with the cow family he has behind him ought to do it. His Surelock sired dam has a WW ratio of 107 on 3 calves and YW of 110 and his grandam, R82, is as stout and thick as you can make one.

17 ES GB8

CE SCORE



CE	BW	WW	YW	ADG	MCE	Milk	MWW	Stay	DOC	CW	YG	Marb	BF	REA	API	TI
5	3.2	72	108	.22	4	24	60	23	13.6	17.2	-.30	.18	-.039	.75	125	68
		25	30			30	20	1	20		35			30		

REG#3623058 • BD: 3/21/19
Homo Black Homo Polled
3/4 SM 1/4 AN

We expect this guy to add a little more length to his calves. He also comes highly recommended for retaining replacements. His mother had a gorgeous Nightride daughter that sold in 2018 and has a WW ratio of 109 on four calves.

CCR Cowboy Cut 5048Z
SFI Enough Said D3
SFI Miss Too Sweet N85K
Connealy Final Product
ES B8
ES Z53

Adj BW	Adj WW	Adj YW
107	646	1166
Adj Scrotal	WDA	116 Day Gain
37.5	3.30	3.28



ES D8, Maternal Sister



ES E6, Maternal Sister

**18 ES GC37**

CE SCORE



CE	BW	WW	YW	ADG	MCE	Milk	MWW	Stay	DOC	CW	YG	Marb	BF	REA	API	TI
15	1.0	81	124	.27	9	15	55	19	12.9	44.6	-.07	.55	-.006	.65	157	85
		20	5	10	15	10			15	30	10		10		3	3

REG#3623070
BD: 3/31/19Homo Black
Homo Polled
1/2 SM 1/2 AN

CCR Cowboy Cut 5048Z
TJ Franchise 451D
TJ Miss Net Worth U11
R B Active Duty 010
ES C37
ES X85

Adj BW	Adj WW	Adj YW
97	610	1129
Adj Scrotal	WDA	116 Day Gain
38.1	3.18	3.28



ES D105, Daughter of Grandam

Look at the insert pictures, if this guy can breed anything even remotely close to his maternal sisters, it's a homerun. The E6 heifer was gorgeous and was purchased by Pat Cramton in Kansas. The powerful D105 is working for Schultz and Weber in the Emery area, I understand Windy Creek is offering a heck of a Surelock son out of D105 in their sale this year. He also comes with two Right Choice logos.

19 ES GE102



CE SCORE



CCR Cowboy Cut 5048Z
TJ High Plains 986E
TJ Ms. 38W
ES Loaded BU56-1
ES E102
ES Y71

Adj BW	Adj WW	Adj YW
104	659	1233
Adj Scrotal	WDA	116 Day Gain
34.6	3.10	3.62

CE	BW	WW	YW	ADG	MCE	Milk	MWW	Stay	DOC	CW	YG	Marb	BF	REA	API	TI
7	4.0	81	122	.25	1	31	71	19	15.6	59.1	-.29	.28	-.070	1.00	140	80
	10	10	20			3	1	20	4	1		10		15	15	5

REG#3623100 • BD: 2/13/19 • **Homo Black Homo Polled Purebred**

One of the long sided bulls in the sale. One could only imagine that look he would stamp on a set of feeder calves, not to mention what the replacement females would look like. His sire, High Plains, was our choice of a Cowboy Cut son to use on heifers, he's the only one in the sale, most of the other High Plain calves were born to the females that we sold in last spring's sale. This guy boasts some impressive individual data ratioing 108 & 109 for WW & YW and his EPD profile lists him in the top 20% of the breed in 12 different categories.



20 ES GD121



CE SCORE



CE	BW	WW	YW	ADG	MCE	Milk	MWW	Stay	DOC	CW	YG	Marb	BF	REA	API	TI
15	.1	75	119	.27	10	25	63	17	6.0	32.4	-.19	.54	-.030	.66	154	84
	20	15	15	15	10	25	10	30				15			4	3

REG#3623081
BD: 3/7/19

Homo Black
Homo Polled
1/2 SM 1/2 AN

CCR Cowboy Cut 5048Z
TJ Franchise 451D
TJ Miss Net Worth U11
W/C United 956Y
ES D121
Hook's Whoopi 68W

Adj BW	Adj WW	Adj YW
88	602	1120
Adj Scrotal	WDA	116 Day Gain
36.3	3.00	3.28



TJ Franchise 451D, Sire

If you want a bull to fix a set of numbers and put a look to a set of calves, Franchise seems to be getting the job done. He's one of the most sought after bulls in the breed with ABS and Triangle J owning him after buying 1/2 interest in the Walsh dispersal.

21 ES GA112



CE SCORE



CE	BW	WW	YW	ADG	MCE	Milk	MWW	Stay	DOC	CW	YG	Marb	BF	REA	API	TI
11	2.5	81	121	.25	8	24	64	19	7.3	40.3	-.19	.49	-.046	.65	147	82
		5	10	25	30	35	10	15		15		20			10	5

REG#3623032 • BD: 3/12/19
Hetero Black Homo Polled
3/4 SM 1/4 AN

CCR Cowboy Cut 5048Z
TJ Franchise 451D
TJ Miss Net Worth U11
TNT Axis X307
ES A112
ESS55

Adj BW	Adj WW	Adj YW
96	606	1105
Adj Scrotal	WDA	116 Day Gain
36.1	3.08	3.15

His sire, TJ Franchise, spent most of 2019 in stud at CGS in Mitchell, SD. Visitors that came through were extremely impressed with his structural soundness and muscle dimension. Of those that saw him, most ordered semen as his EPD profile only continues to get better.

22 ES GB21-1

CE SCORE

★★★★

CE	BW	WW	YW	ADG	MCE	Milk	MWW	Stay	DOC	CW	YG	Marb	BF	REA	API	TI
13	1.6	84	129	.28	8	20	62	20	14.7	33.1	-.27	.38	-.037	.85	148	83
		3	3	10	20		15	10	10	35		35		15	10	4

REG#3623044 • BD: 2/12/19 • Hetero Black Homo Polled 5/8 SM 1/4 AN 1/8 AR

CCR Cowboy Cut 5048Z
 ES Upper Edge E480B
 W/C Miss Werning 480B
 W/C United 956Y
 ES B21
 ES Z85

Adj BW	Adj WW	Adj YW
83	621	1202
Adj Scrotal	WDA	116 Day Gain
38.5	3.24	3.66



You want a flashy set of feeder calves to top the market sale day, be sure to check him out. He's super long with a bit more frame. If you want maternal, his dam has weaned three natural calves with a WW ratio of 113, of which one was a bull that is now working for Rydeen Farms at Clearbrook, MN.

23 ES GB88

CE SCORE

★★★★

CE	BW	WW	YW	ADG	MCE	Milk	MWW	Stay	DOC	CW	YG	Marb	BF	REA	API	TI
7	1.0	67	101	.21	5	21	55	14	14.4	33.5	-.31	.40	-.063	.78	125	73
										35	30	30	30	25		35

REG#3623059 • BD: 3/16/19
 Homo Black Homo Polled
 3/8 SM 3/8 AN 1/4 CS

I describe him as just a great all-around bull. A little lighter bone with lots of rib. His numbers are OK, but they could even be better, but he gets beat up a little for having a non-recorded dam. He does ratio 103 for WW and 105 for YW and has a G+ rating.

CCR Cowboy Cut 5048Z
 ES Upper Edge E480B
 W/C Miss Werning 480B
 ES B88

Adj BW	Adj WW	Adj YW
95	632	1193
Adj Scrotal	WDA	116 Day Gain
36.3	3.28	3.53

24 ES GX0100

CE SCORE

★★★

CE	BW	WW	YW	ADG	MCE	Milk	MWW	Stay	DOC	CW	YG	Marb	BF	REA	API	TI
11	2.3	74	114	.25	7	21	58	19	11.7	41.9	-.27	.18	-.057	.82	129	71
		20	20	25			35	10		10				20		

REG#3623133 • BD: 3/16/19
 Homo Black Homo Polled
 5/8 SM 3/8 AN

We selected his mother out of the Wild Wild West sale from Willie Altenburg in 2012. Back then the Connealy Thunder daughters were thought to be pretty good and she was. If your desire is to add some frame and stretch to your calves, look him up, he may do just that.

CCR Cowboy Cut 5048Z
 ES Upper Edge E480B
 W/C Miss Werning 480B
 Connealy Thunder
 ASR Ms. Super Baldy X0100
 ASR Ms. Blackbird T7103

Adj BW	Adj WW	Adj YW
96	611	1132
Adj Scrotal	WDA	116 Day Gain
39.8	3.18	3.28

25 ES GW95

CE SCORE

★★★★

CE	BW	WW	YW	ADG	MCE	Milk	MWW	Stay	DOC	CW	YG	Marb	BF	REA	API	TI
13	2.2	75	112	.23	5	20	58	18	17.3	18.9	-.31	.34	-.049	.71	138	76
		15	25				35	25	2	30		35	25	25		

REG#3623132 • BD: 4/8/19
 Homo Black Homo Polled
 5/8 SM 3/8 AN

His mother had redefined the term "Cow Power" she was just ahead of her time, she's just an absolute truck. His sire, Upper Edge, was purchased by Quandt Brothers a couple of years ago, he was a Cowboy Cut son out of the high powered 480B cow.

CCR Cowboy Cut 5048Z
 ES Upper Edge E480B
 W/C Miss Werning 480B
 O C C Paxton 730P
 ES W95
 ESS81

Adj BW	Adj WW	Adj YW
87	590	1153
Adj Scrotal	WDA	116 Day Gain
39.5	3.26	3.53

26 ES GB30

CE SCORE



CE	BW	WW	YW	ADG	MCE	Milk	MWW	Stay	DOC	CW	YG	Marb	BF	REA	API	TI
11	3.6	81	125	.28	5	23	63	19	16.8	41.9	-.38	.17	-.082	.96	139	79
		5	5	10			10	15	3	10	15		15	5	20	15

REG#3623047 • BD: 3/17/19 • **Homo Black Homo Polled 3/4 SM 1/4 AN**

CCR Cowboy Cut 5048Z
 ES Upper Edge E480B
 W/C Miss Werning 480B
 Remington Lock N Load 54U
 ES B30
 ES X86

Adj BW	Adj WW	Adj YW
103	625	1228
Adj Scrotal	WDA	116 Day Gain
34.8	3.37	3.79



For those that sell them by the pound, GB30 should be on your short list. With his added length and muscle, you can only smile imagining what his calves will look like crossed on a set of British based cows. He was the 7th highest gaining bull since weaning and has WW & YW #'s in the top 5% of the breed and to verify it, his DNA gave him the ATM logo which means \$'s in your pocket on sale day.

27 ES GD26

CE SCORE



CE	BW	WW	YW	ADG	MCE	Milk	MWW	Stay	DOC	CW	YG	Marb	BF	REA	API	TI
14	.5	79	120	.26	8	21	61	19	10.5	30.6	-.27	.43	-.053	.70	151	83
25		10	10	20	30		20	15			25		35	10	4	

REG#3623086
BD: 4/3/19**Homo Black
Homo Polled
5/8 SM 3/8 AN**

TJ Main Event 503B
 CDI Innovator 325D
 CDI Ms. Shear Force 49U
 Connealy Capitalist 028
 ES D26
 ES B72

Adj BW	Adj WW	Adj YW
93	611	1067
Adj Scrotal	WDA	116 Day Gain
37.2	2.97	2.89

I would lean this bull towards someone who desires trouble free genetics. His pedigree offers a lot of calving ease with his Connealy Capitalist dam. Can't wait to see if the Innovator heifers are as good as we think they will be.



CDI Innovator 325D, Sire

28 ES GY66

CE SCORE



CE	BW	WW	YW	ADG	MCE	Milk	MWW	Stay	DOC	CW	YG	Marb	BF	REA	API	TI
17	.1	80	121	.26	9	26	66	17	15.9	50.3	-.39	.07	-.096	.99	132	76
10		5	10	20	20	20	5	35	5	2	15		10	4	35	20

REG#3623152
BD: 3/10/19**Homo Black
Homo Polled
3/4 SM 1/4 AN**

TJ Main Event 503B
 CDI Innovator 325D
 CDI Ms. Shear Force 49U
 Mr. NLC Superior S6018
 ES Y66
 ESP10

Adj BW	Adj WW	Adj YW
84	605	1099
Adj Scrotal	WDA	166 Day Gain
40.4	3.06	3.10

He is a moderate made individual that is very soft in his makeup. His dam is one of Paul's favorite cows, maybe its because he owned her mother. She has certainly earned her keep around here having 5 bulls in past sales that averaged \$9,450, highlighted by the full brother purchased by Jerry Walsh last year. He's awfully well balanced on paper having 13 traits that rank him in the top 20% of the breed.



ES FY66, Full Brother

29 ES GX46

CE SCORE

★★★

CE	BW	WW	YW	ADG	MCE	Milk	MWW	Stay	DOC	CW	YG	Marb	BF	REA	API	TI
15	-.8	76	117	.25	8	27	66	15	15.9	35.8	-.21	.10	-.042	.67	128	75
15	25	15	15	25	30	10	5		5	25						25

REG#3623140 • BD: 3/12/19 • Hetero Black Homo Polled 1/2 SM 1/2 AN

Mr. NLC Upgrade U8676

TJ Main Event 503B

TJ Miss New Day U14

Sitz Upward 307R

ES X46

ESL38

Adj BW	Adj WW	Adj YW
85	621	1149
Adj Scrotal	WDA	116 Day Gain
39.6	3.22	3.32

This guy hit me hard the other day in the bull pen (Cathy's clarification...the "Wow" factor). He has the nice CE look of Main Event yet has the length and muscle that you'll want every cow on the ranch bred to him. The maternal traits of his Sitz Upward dam are the icing on the cake. These are the type of cattle we are proud to put the ES brand on. Ratioed 109 for BW then had WW & YW EPDs that rank him in the top 15% of the breed.

**30 ES GB28**

CE SCORE

★★★

CE	BW	WW	YW	ADG	MCE	Milk	MWW	Stay	DOC	CW	YG	Marb	BF	REA	API	TI
17	-.3	74	113	.24	10	27	64	13	9.8	49.5	-.39	.17	-.092	1.03	129	76
10	35	20	20	35	5	15	10		3	15			10	3		25

REG#3623045 • BD: 4/2/19
Homo Black Homo Polled
3/4 SM 1/4 AN

ES DB28, Maternal Brother

One of the most consistent sire groups we had in last year's sale were the Innovators. The commercial guys loved them; 9 sons averaged over \$6,000. He was a former NWSS champion that was bred and raised in North Dakota. Comes with some calving ease also, dam a BW ratio of 107 on four calves.

TJ Main Event 503B

CDI Innovator 325D

CDI Ms. Shear Force 49U

Remington Lock N Load 54U

ES B28

ES X52

Adj BW	Adj WW	Adj YW
87	609	1067
Adj Scrotal	WDA	116 Day Gain
35.9	3.03	2.89

31 ES GY38

CE SCORE

★★

CE	BW	WW	YW	ADG	MCE	Milk	MWW	Stay	DOC	CW	YG	Marb	BF	REA	API	TI
6	1.8	73	109	.22	1	29	66	21	11.6	37.4	-.30	.20	-.065	.78	128	72
		20	30			5	5	2		20	35		30	25		

REG#3623150 • BD: 3/18/19
Homo Black Homo Polled
1/2 SM 1/2 AN

ES EY38, Full Brother

There's a lot of power in this cow family, her calves tend to be very heavy muscled. His sire, Main Event, was only used on a few of our cows the first year and got along so well we've been using him on heifers the last couple of years with great success.

Mr. NLC Upgrade U8676

TJ Main Event 503B

TJ Miss New Day U14

KCC Saginaw 6W

ES Y38

ESR82

Adj BW	Adj WW	Adj YW
98	622	1129
Adj Scrotal	WDA	116 Day Gain
34.9	3.17	3.19

32 ES GE88

CE SCORE



Mr. NLC Upgrade U8676
TJ Main Event 503B
TJ Miss New Day U14
CCR Gravity 9064A
ES E88
ES B4

Adj BW	Adj WW	Adj YW
104	588	1168
Adj Scrotal	WDA	116 Day Gain
37.3	2.99	3.66

CE	BW	WW	YW	ADG	MCE	Milk	MWW	Stay	DOC	CW	YG	Marb	BF	REA	API	TI
9	3.2	89	132	.27	5	16	60	17	12.8	53.6	-.37	-.04	-.072	1.16	113	73
		1	2	15			20		30	1	15		20	1		35

REG#3623121 • BD: 3/12/19 • **Hetero Black Hetero Polled 3/4 SM 1/4 AN**

He is a real smooth made individual that is a little lighter boned and clean jointed. This Main Event son ranks in the top 1% & 2% of the breed for WW & YW. Flashback, 4 generations back is the old show heifer Ruby, they had a lot of fun and success with her for a couple of years.

**33 ES GE1**

CE SCORE



CE	BW	WW	YW	ADG	MCE	Milk	MWW	Stay	DOC	CW	YG	Marb	BF	REA	API	TI
8	1.7	85	129	.28	2	18	60	15	11.9	44.0	-.30	.10	-.064	.87	118	76
		2	4	10			20		10	35		30	10			25

REG#3623099
BD: 2/8/19

Hetero Black
Homo Polled
1/2 SM 5/16 AN
3/16 AR

Mr. NLC Upgrade U8676
TJ Main Event 503B
TJ Miss New Day U14
ES Buckshot BT51-2
ES E1
Pelton Miss 941A

Adj BW	Adj WW	Adj YW
98	598	1064
Adj Scrotal	WDA	116 Day Gain
37	2.77	2.97

A sensible made Main Event son, his Buckshot mother is spot on when it comes to udder quality. The Buckshot females make some awfully nice cows. You have to admire the growth indicator here, WW & YW EPDs are in the top 2% & 4% of the breed and has the Right Choice ATM stamp of certification that his genotype is capable of having calves that will generate more value come sale day.



TJ Main Event 503B, Sire

34 ES GD31

CE SCORE



Mr. NLC Upgrade U8676
TJ Main Event 503B
TJ Miss New Day U14
W/C Bullseye 3046A
ES D31
ES Z80

Adj BW	Adj WW	Adj YW
87	617	1052
Adj Scrotal	WDA	116 Day Gain
37.2	2.86	2.76

CE	BW	WW	YW	ADG	MCE	Milk	MWW	Stay	DOC	CW	YG	Marb	BF	REA	API	TI
15	-1.3	72	108	.22	6	22	58	19	17.1	42.1	-.41	.23	-.083	1.04	142	77
		15	20	25	30		30	15	2	10	10		15	3	15	20

REG#3623087 • BD: 3/15/19
Homo Black Hetero Polled
3/4 SM 1/4 AN

Last year I would have given this guy 4 stars for calving ease, but without the ACE logo, I defer. But I do feel with some caution he could go that way. The Main Event cattle have been widely accepted across the breed.

35 ES GB101-1

CE SCORE



CE	BW	WW	YW	ADG	MCE	Milk	MWW	Stay	DOC	CW	YG	Marb	BF	REA	API	TI
12	-.6	76	115	.25	5	17	55	18	13.2	42.1	-.27	.38	-.053	.85	143	80
	25	15	20	25				25	25	10		35		15	15	10

Adj BW	Adj WW	Adj YW
91	662	1271
Adj Scrotal	WDA	116 Day Gain
33.5	3.40	3.84

REG#3591889 • BD: 2/2/19 • **Homo Black Homo Polled 5/8 SM 3/8 AN**ES FB101-3,
Maternal Brother**36 ES GB101-3**

CE SCORE



CE	BW	WW	YW	ADG	MCE	Milk	MWW	Stay	DOC	CW	YG	Marb	BF	REA	API	TI
16	.5	82	124	.26	8	15	56	16	11.5	36.5	-.31	.31	-.050	.93	141	82
	15	4	10	20	30					25	30			10	15	10

Adj BW	Adj WW	Adj YW
83	587	1148
Adj Scrotal	WDA	116 Day Gain
31.8	3.07	3.53

REG#3623041 • BD: 2/8/19 • **Homo Black Homo Polled 5/8 SM 3/8 AN**

Pedigree for Lots 35-36:

Hook's Black Hawk 50B

Hook's Eagle 6E

Hook's Crystal 1C

B C Lookout 7024

ES B101

Frankes/MPC Night Dreams

Cutting edge genetics here boys and girls. Sired by one of the new young hot shots in the Simmy world, Hook's Eagle. Eagle bulls are already topping sales and leading off sale catalogs in his first year. Mated to one of our young donors, B101 or "Minnie" as we call her around the place. I don't know how she got that name because she is far from it. She is a powerful fall born female that Adam showed with a lot of success. This pair of bulls should garner some attention sale day for their length of body and overall appearance. The GB101-1 has been the 5th highest gaining bull since weaning and Adj. YW. It's interesting to see how incorporating the new technology like DNA and genomic testing can take full brothers and help separate some differences. Study the EPDs and indexes along with the new Right Choice markers to see what we mean.

37 ES GC18

CE	BW	WW	YW	ADG	MCE	Milk	MWW	Stay	DOC	CW	YG	Marb	BF	REA	API	TI
17	-1.9	83	127	.27	10	19	61	19	16.9	43.0	-.24	.59	-.042	.86	169	92
10	10	3	5	15	10		20	15	3	10		10		15	1	1

REG#3623066
BD: 3/12/19

Hetero Black
Homo Polled
5/8 SM 3/8 AN

Hook's Black Hawk 50B
Hook's Eagle 6E
Hook's Crystal 1C
W/C Lock Down 206Z
ES C18
Miss Werning 315A

Adj BW	Adj WW	Adj YW
69	578	1097
Adj Scrotal	WDA	116 Day Gain
32.6	3.00	3.28



Hooks Eagle 6E, Sire

Every year we have folks tell us they only have a couple of heifers, so they want a bull that would work on heifers, but also not sacrifice too much on the cows. Well, here he is. Top 10% of the breed for CE & BW, then top 3% and 5% for WW & YW. He has those curve bending numbers we all strive for, and indexes that are in the top 1% of the breed. Check out his relative, ES G315A (Lot 13), a son of the grandam.

38 ES GD91

CE	BW	WW	YW	ADG	MCE	Milk	MWW	Stay	DOC	CW	YG	Marb	BF	REA	API	TI
11	2.3	93	137	.28	7	14	60	14	18.0	52.7	-.39	.39	-.076	1.19	147	92
		1	1	10			20		2	2	15	35	20	1	10	1

REG#3623097 • BD: 3/6/19
Homo Black Homo Polled
3/4 SM 1/4 AN

It's hard to know where his birth weight will land when his dam's 1st calf only weighed 64 lbs. The pedigree certainly doesn't indicate any birth weight. Sired by the new kid, Hook's Eagle, then back to the time-tested Cowboy Cut.

Hook's Black Hawk 50B
Hook's Eagle 6E
Hook's Crystal 1C
CCR Cowboy Cut 5048Z
ES D91
ES A61

Adj BW	Adj WW	Adj YW
111	614	1195
Adj Scrotal	WDA	116 Day Gain
37.2	3.15	3.66

39 ES GE37

CE	BW	WW	YW	ADG	MCE	Milk	MWW	Stay	DOC	CW	YG	Marb	BF	REA	API	TI
15	-.7	68	107	.24	8	23	57	18	13.1	30.2	-.26	.30	-.037	.80	141	75
15	25		35	35	25		35	30	25					20	20	25

REG#3623111 • BD: 1/27/19
Homo Black Homo Polled
1/2 SM 1/2 AN

It was a cold one the day he was born, and it was our wake-up call, it's time to get the heifers sorted up, it's calving time. He's a long sided 4-star calving ease bull. Out of a cow with a very good udder.

Hoover Dam
CCR Boulder 1339A
CCR Ms. L Taylor 1339Y
W/C United 956Y
ES E37
ESU80

Adj BW	Adj WW	Adj YW
75	584	1121
Adj Scrotal	WDA	116 Day Gain
34.7	2.80	3.41

**40 ES GE23**

CE	BW	WW	YW	ADG	MCE	Milk	MWW	Stay	DOC	CW	YG	Marb	BF	REA	API	TI
14	-.5	64	95	.19	8	24	56	18	11.9	28.1	-.33	.54	-.056	.84	150	78
25	30				25	35		25			25	15		15	10	15

REG#3623108 • BD: 3/5/19
Homo Black Homo Polled
5/8 SM 3/8 AN

I'm willing to bet a couple of good cowboys will find this thick made, bold sprung individual who cracked the top 10 for gain since weaning. We don't have any in production yet, but I'm willing to bet these Boulders are going to make some nice cows.

Hoover Dam
CCR Boulder 1339A
CCR Ms. L Taylor 1339Y
ES Load Limit AW9
ES E23
ES C49

Adj BW	Adj WW	Adj YW
91	556	1142
Adj Scrotal	WDA	116 Day Gain
36.7	2.89	3.71

41 ES GZ110

CE	BW	WW	YW	ADG	MCE	Milk	MWW	Stay	DOC	CW	YG	Marb	BF	REA	API	TI
6	3.8	93	143	.32	2	18	64	11	5.9	50.6	-.14	.14	-.035	.68	108	78
		1	1	2			10			2						15

REG#3623155 • BD: 3/19/19 • **Homo Black Homo Polled 5/8 SM 3/8 AN**

TNT Tuition U238
W/C United 956Y
Miss Werning 956W
R&R Chamberlain X744
ES Z110
ESU56

Adj BW	Adj WW	Adj YW
109	639	1214
Adj Scrotal	WDA	116 Day Gain
40.4	3.39	3.62



When the science says he should be an ATM bull (more value when you go to market) and you can physically put your eyes on a meat wagon like this, even a simple minded person like myself can say "yes" that makes sense. If he was a steer (and judging by the size of his scrotum he is not) you'd love to have a whole feedlot full just like him. He offers some great individual performance and carries the United EPDs, top 1% of the breed for WW & YW.

**42 ES GZ71**

CE SCORE ★★

CE	BW	WW	YW	ADG	MCE	Milk	MWW	Stay	DOC	CW	YG	Marb	BF	REA	API	TI
11	2.1	80	127	.29	6	21	61	17	4.7	40.7	-.03	.20	-.007	.44	127	75
		5	5	10			15	35		15						30

REG#3623162
BD: 4/7/19**Homo Black
Homo Polled
1/2 SM 1/2 AN**

TNT Tuition U238
W/C United 956Y
Miss Werning 956W
Duff New Edition 6108
ES Z71
ESS55

Adj BW	Adj WW	Adj YW
95	746	1177
Adj Scrotal	WDA	116 Day Gain
36.7	3.42	2.72



ES EZ71, Full Brother

Didn't have to look at the paper very long to figure out if you sell them by the pound this bull is pretty good. He is the #2 WW bull ratioing 122 and is in the top 10 for WDA. We've been selling United sons for a few years now and the commercial guys line up to get them. Why? Because the growth numbers are real. This long sided, attractive bull has a bright future.

43 ES GX80

CE SCORE ★

CE	BW	WW	YW	ADG	MCE	Milk	MWW	Stay	DOC	CW	YG	Marb	BF	REA	API	TI
5	4.0	89	139	.31	2	15	60	12	7.0	49.3	-.10	.00	-.029	.62	99	71
		1	1	3			25			3						

REG#3623143 • BD: 3/16/19
**Homo Black Homo Polled
1/2 SM 1/2 AN**

TNT Tuition U238
W/C United 956Y
Miss Werning 956W
Duff New Edition 6108
ES X80
ESR5

Adj BW	Adj WW	Adj YW
107	688	1223
Adj Scrotal	WDA	116 Day Gain
36.8	3.46	3.36

When something works, we tend to stick with it. This is the 5th time we have bred X80 to United, 2 females are in herd and the 3 bulls have been in the bull sale. She has weaned 7 calves with a WW ratio of 106. You gotta love his individual performance ratioing 113 for WW and 108 for YW and is the #7 bull on the WDA chart with WW & YW EPDs in the top 1% of the breed.

44 ES GC45

CE SCORE



CE	BW	WW	YW	ADG	MCE	Milk	MWW	Stay	DOC	CW	YG	Marb	BF	REA	API	TI
17	-1.4	70	103	.21	7	19	54	16	9.3	35.3	-.18	.40	-.048	.53	145	78
10	15	35							30			30			15	15

REG#3623071
BD: 4/22/19**Homo Black**
Homo Polled
5/8 SM 3/8 ANW/C United 956Y
ES BX381-1
HS Look At Me X381N
CCR Cowboy Cut 5048Z
ES C45
ES Z45

Adj BW	Adj WW	Adj YW
87	654	1173
Adj Scrotal	WDA	116 Day Gain
35.8	3.32	3.28

Anytime you can be the youngest bull in the sale and run with the middle of the pack it's a big accomplishment. Offers a well balanced set of EPDs from end to end and has great actuals. Ratioing 107, 107 and 103 for BW, WW and YW. To top it off his dam has a WW ratio of 110 on 3 calves. Sorry Amanda, you're getting older, 5 generations back is your old show heifer "Arnie", a K model. She was more of a cow than a show heifer.



Nick, Amanda & Arnie

45 ES GD45

CE SCORE



CE	BW	WW	YW	ADG	MCE	Milk	MWW	Stay	DOC	CW	YG	Marb	BF	REA	API	TI
11	3.5	92	139	.30	7	16	62	17	11.8	46.3	-.35	.15	-.094	.84	138	84
	1	1	2	30			15		35	2		20			20	2

REG#3623089
BD: 3/12/19**Homo Black**
Homo Polled
PurebredWBF Significant B132
Rubys Turnpike 771E
Rubys Miss Cleo 240Z
CCR Spartan 9124A
ES D45
ES A112

Adj BW	Adj WW	Adj YW
98	645	1247
Adj Scrotal	WDA	116 Day Gain
39.6	3.32	3.79

Don't discount this bull because upper management didn't find him and get him in the picture pen. I'm going to have to have a talk with that guy... (I can probably do it looking in the mirror). I guess you'll have to wait for the video. He's nice structured with plenty of rib and was the 8th highest gaining bull since weaning. Ratio 106 for WW then on to 110 for YW.



Rubys Turnpike 771E, Sire

46 ES GE42

CE SCORE



CE	BW	WW	YW	ADG	MCE	Milk	MWW	Stay	DOC	CW	YG	Marb	BF	REA	API	TI
14	.0	72	112	.25	7	22	58	14	7.1	34.7	-.13	.55	-.033	.48	145	82
25	25	25	25				30		30			10			10	10

REG#3623112
BD: 2/13/19**Homo Black**
Homo Polled
1/2 SM 1/2 ANK C F Bennett Absolute
CLRS Conquest 634 C
Hooks Solemn 334S
TJ Main Event 503B
ES E42
Miss Werning 377A

Adj BW	Adj WW	Adj YW
95	610	1132
Adj Scrotal	WDA	116 Day Gain
36.3	2.88	3.32

He's a homo black and polled 3rd generation 1/2 Simmy that just fills in all the blanks with no big gapping holes. His dam is one of our first Main Event heifers to calve and it looks like all systems go.

CLRS Conquest 634 C, Sire

**47 ES GE20**

CE SCORE



CE	BW	WW	YW	ADG	MCE	Milk	MWW	Stay	DOC	CW	YG	Marb	BF	REA	API	TI
20	-3.1	69	103	.21	13	20	54	19	11.7	31.5	-.48	.35	-.048	1.40	169	85
1	1				1			25	35	35		3		1	1	2

REG#3623107
BD: 2/19/19**Homo Black**
Homo Polled
PurebredHooks Shear Force 38K
Hook's Beacon 56B
Hooks Zafirah 41Z
CCR Santa Fe 9349Z
ES E20
ES C109

Adj BW	Adj WW	Adj YW
67	543	1076
Adj Scrotal	WDA	166 Day Gain
34.4	2.68	3.36

If there was ever a bull I thought would get the ACE stamp of approval through the Right Choice program, it was this guy. So much for cowboy logic, it's not my nature, I'll go with the science and only give him 3 stars for calving ease. BUT my cowboy logic says a smaller made, lighter boned individual with a 67 lb. birth weight and CE of 20 with a -3 lb. Birth EPD should work on heifers. I'll add a disclaimer and say use with some caution.



Hook's Beacon 56B, Sire

48 ES GE28

CE SCORE

★★★★

CE	BW	WW	YW	ADG	MCE	Milk	MWW	Stay	DOC	CW	YG	Marb	BF	REA	API	TI
10	-1.1	91	137	.29	5	14	60	16	12.7	48.9	-.09	.35	-.017	.65	143	88
20	1	1	10				25		30	3					15	1

REG#3623110 • BD: 2/26/19 • **Homo Black Homo Polled 1/2 SM 1/2 AN**

These Frosty calves are impressive in terms of their balance and eye appeal. There's a lot of fancy words you could use to describe this guy, but the nuts and bolts of it are he's just a darn good bull. Not often do you get a bull out of a 1st calf heifer that can run with the big guys but he ratioed 113 for WW and 110 for YW and has EPDs that rank him in the top 1% of the breed for WW & YW. Find him sale day, you won't be disappointed.



TJ Frosty 318E, Sire



ES EX16, Maternal Brother



ES D37, Maternal Sister

49 ES GX16

CE SCORE

★★★★

CE	BW	WW	YW	ADG	MCE	Milk	MWW	Stay	DOC	CW	YG	Marb	BF	REA	API	TI
20	-3.1	70	102	.20	8	26	61	20	14.2	28.7	-.19	.10	-.040	.54	143	74
1	4	30			20	20	15	10	15						15	30

REG#3623135
BD: 3/16/19**Homo Black
Homo Polled
5/8 SM 3/8 AN**

ACW Ironhide 395Y

TJ Frosty 318E

TJ 58B

Ellingson Legacy M229

ES X16

ESU16

Adj BW	Adj WW	Adj YW
80	574	1129
Adj Scrotal	WDA	116 Day Gain
34.8	3.12	3.49

This is a bull that if I was selecting without the Right Choice program, I would have given him 4 stars for CE. So, with a little caution he could go that way. I will say there's a lot of bull for a 4 star. His dam has never had a big birth weight calf and has a BW ratio of 108 on 8 calves. If it's eye appeal, it's in his genes, these Frosty calves are cool, and his maternal brother was tagged the Tom Brady of the bull pen 2 years ago.

50 ES GE70

CE SCORE

★★★★

CE	BW	WW	YW	ADG	MCE	Milk	MWW	Stay	DOC	CW	YG	Marb	BF	REA	API	TI
16	-2.3	85	127	.26	8	21	63	18	15.2	32.7	-.33	.28	-.056	.88	152	86
10	10	2	4	20	30		10	20	10	40	25			10	5	2

REG#3623119 • BD: 2/16/19
**Homo Black Homo Polled
5/8 SM 3/8 AN**

We are seeing a pattern on these TJ Frosty calves in terms of body and muscle, they are consistent, there's lots of it. It's neat having a heifer bull where the calves develop this much muscle and have WW & YW EPD's and API & TI indexes in the top 5% of the breed.

ACW Ironhide 395Y

TJ Frosty 318E

TJ 58B

W/C United 956Y

ES E70

ES B10

Adj BW	Adj WW	Adj YW
85	589	1078
Adj Scrotal	WDA	116 Day Gain
35.2	2.75	3.10

51 ES GZ26

CE SCORE



CE	BW	WW	YW	ADG	MCE	Milk	MWW	Stay	DOC	CW	YG	Marb	BF	REA	API	TI
8	-5	83	122	.25	4	18	59	18	13.8	48.2	-.11	.25	-.039	.55	133	79
30	4	10	25				25	20	20	4					30	10

REG#3623158
BD: 3/22/19**Homo Black**
Homo Polled
1/2 SM 1/2 ANACW Ironhide 395Y
TJ Frosty 318E
TJ 58B
Connealy Final Product
ES Z26
ES X22

Adj BW	Adj WW	Adj YW
94	622	1163
Adj Scrotal	WDA	116 Day Gain
37.6	3.30	3.41

His sire, TJ Frosty, is a bull we predominately used on heifers except for this cow, by the looks of it maybe should have used him on a few more. You'll like him for his big hip and overall dimension. Not only is he easy on the eyes, but his numbers are pretty good also.

**52 ES GE25**

CE SCORE



CE	BW	WW	YW	ADG	MCE	Milk	MWW	Stay	DOC	CW	YG	Marb	BF	REA	API	TI
16	-3.1	77	116	.24	8	26	65	19	6.7	37.2	-.21	.19	-.040	.70	145	81
10	4	10	15	35	20	20	10	20	25					35	10	10

REG#3623109
BD: 2/13/19**Homo Black**
Baldy
Homo Polled
5/8 SM 3/8 ANACW Ironhide 395Y
TJ Frosty 318E
TJ 58B
W/C United 956Y
ES E25
ES B99

Adj BW	Adj WW	Adj YW
75	555	1030
Adj Scrotal	WDA	116 Day Gain
33.1	2.61	3.02

I know he's not the biggest bull in the pen, but when you see him, you'll have to admit he's pretty darn cool. He's axe handle wide from the rear. The Frosty calves are very light at birth but are coming on to be some of the heaviest muscled bulls by sale day. He even got 2 markers on the Right Choice program.

**53 ES GE59**

CE SCORE



CE	BW	WW	YW	ADG	MCE	Milk	MWW	Stay	DOC	CW	YG	Marb	BF	REA	API	TI
15	-.6	69	107	.24	10	24	58	22	8.0	43.4	-.23	.21	-.049	.79	145	73
15	25	35	35	35	4	35	30	2	10					20	15	35

REG#3623116 • BD: 2/14/19

Homo Black Homo Polled
5/8 SM 3/8 AN

Sometimes if you are not sure what direction you need to go it makes sense not to chase the extremes. You need a bull that is well balanced and won't cause any problems. This Diplomat son is that kind of bull.

MAR Innovation 251
TJ Diplomat 294D
TJ 33Y
TJ Power Grid 363Y
ES E59
ES A13

Adj BW	Adj WW	Adj YW
85	598	1080
Adj Scrotal	WDA	116 Day Gain
34.8	2.76	3.06

54 ES GY59

CE SCORE



CE	BW	WW	YW	ADG	MCE	Milk	MWW	Stay	DOC	CW	YG	Marb	BF	REA	API	TI
8	2.2	75	117	.26	5	26	63	9	10.8	49.8	-.32	.23	-.067	.98	109	73
		15	15	20		20	10			3	30		30	4		35

REG#3623151 • BD: 4/11/19

Homo Black Hetero Polled
3/4 SM 1/4 AN

This young April bull has as much middle third as any and boasts some nice ratios of 107 for WW and 106 for YW. His mother is a real female maker having 5 heifers, one being the beautiful Aviator heifer purchased by Hoffman Ranches in Nebraska. His sire is an outcross bull raised by Keller's in North Dakota.

G A R Prophet
KBHR Wentz E190
KBHR X281
ES Reloaded TR64
ES Y59
ESM15

Adj BW	Adj WW	Adj YW
90	653	1201
Adj Scrotal	WDA	116 Day Gain
36.7	3.42	3.45



ES E67, Maternal Sister

55 ES GXM15

CE SCORE



CE	BW	WW	YW	ADG	MCE	Milk	MWW	Stay	DOC	CW	YG	Marb	BF	REA	API	TI
8	2.1	73	114	.25	5	16	53	16	12.9	42.1	-.09	.41	-.011	.61	131	75
		20	20	25						30	10		30		35	25

REG#3623145 • BD: 3/11/19

Homo Black Hetero Polled
1/2 SM 1/2 AN

The only Angus sired Simmy bull we have in the sale this year. But he's not just any Angus sire, it's JK Angus high selling bull two years ago, High Point. I remember the day they brought him over for a picture, he was impressive.

High Point Ring Of Fire 5071
JK High Point 745
J K Blackbird 408
ES Reloaded TR64
ES XM15
ESM15

Adj BW	Adj WW	Adj YW
93	613	1094
Adj Scrotal	WDA	116 Day Gain
36	3.09	3.06

56 ES G104C

CE SCORE

★★★

CE	BW	WW	YW	ADG	MCE	Milk	MWW	Stay	DOC	CW	YG	Marb	BF	REA	API	TI
10	.6	76	121	.28	4	23	61	17	8.9	42.4	-.32	-.04	-.068	.89	116	69
		15	10	10			20	30		10	30		30	10		

REG#3623017 • BD: 3/12/19 • Homo Black Homo Polled 3/4 SM 1/4 AN

Remington Lock N Load 54U
 ES EX75-1
 ES X75
 W/C United 956Y
 Hook's Charity 104C
 Hook's Upper Limit 117U

Adj BW	Adj WW	Adj YW
81	637	1135
Adj Scrotal	WDA	116 Day Gain
35.6	3.14	3.15



His mother, Hook's Charity, is one of the most unique open heifers I had ever seen. She was an open heifer with so much spring of rib and a soft structure. We flushed her to Proclamation two years ago, but all we got were heifers, but that's great because the maternal side of that mating will be awesome. Two full sisters to Charity have each been slapped Grand Champion at the % show at the NWSS. This is her natural calf and exhibits all the same characteristics as Charity does.



ES E104C, Maternal Brother



ES EX75-1, Sire

57 ES GB29

CE SCORE

★★★

CE	BW	WW	YW	ADG	MCE	Milk	MWW	Stay	DOC	CW	YG	Marb	BF	REA	API	TI
9	1.9	74	113	.24	3	23	60	22	11.4	45.2	-.35	.12	-.060	1.09	140	75
		25	25	25			25	2		3	25		10	15	25	

REG#3623046 • BD: 3/22/19
 Hetero Black Homo Polled
 Purebred

There's a lot of little things that when compiled together make this guy kind of interesting. First off, he looks cool, he's well balanced with a nice leg and stands on a good set of feet. We love his pedigree, Cowboy Cut X 004 on the bottom for a strong maternal base then X75 X Lock N Load on the top for a great look and little more gas. He still maintains some calving ease; dam has weaned four calves with a BW ratio of 107.

Remington Lock N Load 54U
 ES EX75-1
 ES X75
 CCR Cowboy Cut 5048Z
 ES B29
 ES W74

Adj BW	Adj WW	Adj YW
90	566	1059
Adj Scrotal	WDA	116 Day Gain
38.1	2.95	3.10

58 ES GY11

CE SCORE

★★

CE	BW	WW	YW	ADG	MCE	Milk	MWW	Stay	DOC	CW	YG	Marb	BF	REA	API	TI
8	2.1	70	106	.22	2	28	64	14	12.5	55.2	-.47	-.09	-.113	1.19	111	68
						10	10		25	1				2		

REG#3623146 • BD: 4/3/19
 Homo Black Homo Polled
 Purebred

He would be an excellent choice if you wanted to retain same replacements, the ES Loaded daughters have been some of the favorite in the bred heifer division the last few years. He would also work well on a set of British base cows to add some length and make a sharp set of feeder calves. We bred his mother to an Angus bull several times with a lot of success. He's the #5 WDA bull and whopping WW & YW ratios of 119 & 110.

Remington Lock N Load 54U
 ES Loaded BU56-1
 ESU56
 TNT Knock Out R206
 ES Y11
 ESR27

Adj BW	Adj WW	Adj YW
104	730	1253
Adj Scrotal	WDA	116 Day Gain
36.2	3.55	3.28

59 ES GC112

CE SCORE

★★

CE	BW	WW	YW	ADG	MCE	Milk	MWW	Stay	DOC	CW	YG	Marb	BF	REA	API	TI
9	2.0	68	106	.24	3	27	61	15	12.5	46.7	-.47	-.17	-.109	1.10	109	64
						15	20		25	2				10		

REG#3623064 • BD: 3/27/19
 Homo Black Homo Polled
 Purebred

A unique opportunity to buy a homo black bull that goes back to CDI Authority. We've seen how well he works on the red side, now here's a black version. His dam has had 3 bulls, and all have made the bull sale. On the bottom side, BC Lookout X Glitter is a time-tested pedigree that works.

Remington Lock N Load 54U
 ES Loadout CA11-2
 GLS Ashley A11
 CDI Authority 77X
 ES C112
 HS Look At Me X381N

Adj BW	Adj WW	Adj YW
98	613	1147
Adj Scrotal	WDA	116 Day Gain
36.4	3.17	3.36

The ES W46 Cow Family

60 ES GW46-2

CE SCORE



Remington Lock N Load 54U
ES EX75-1
ES X75
S A V Net Worth 4200
ES W46
ESS63

Adj BW	Adj WW	Adj YW
89	563	1034
Adj Scrotal	WDA	116 Day Gain
36.1	2.82	2.97

CE	BW	WW	YW	ADG	MCE	Milk	MWW	Stay	DOC	CW	YG	Marb	BF	REA	API	TI
12	1.2	66	103	.23	5	25	58	21	10.1	41.0	-.36	-.01	-.075	.95	122	64
						25	30	3		15	20		20	5		

REG#3623126 • BD: 2/14/19 • Hetero Black Baldy Homo Polled 3/4 SM 1/4 AN

Very interesting trio of bulls to sort through here. They are all good, but in the same sentence they are all different. Their mother, W46, has been in the donor pen multiple times, not necessarily how she reads on paper, but her physical attributes she brings to the table. First off, she is so sound and athletic on her feet, tremendously deep sided but most of all she's 11 years old, going to calve again and has a beautiful udder and has a WW ratio of 106 on her natural calves. Now for the W46 version of my three sons, the baldy GW46-2 is cool, he is not the biggest of the 3 but I like his type and kind. The 2 Upgrade sons offer a little more scale and performance. Ryan Meyer bought a full brother to them last year. No matter which way you go, I suggest retaining the heifers.



ES FW46-4, Full Brother



61 ES GW46-4



CE SCORE



CE	BW	WW	YW	ADG	MCE	Milk	MWW	Stay	DOC	CW	YG	Marb	BF	REA	API	TI
14	1.4	76	113	.23	6	15	53	13	12.5	39.0	-.47	.25	-.096	1.10	127	76
						25	15			35	20	4	10	1		25

REG#3623128
BD: 2/7/19

Homo Black
Homo Polled
3/4 SM 1/4 AN

Ellingson Legacy M229
Mr. NLC Upgrade U8676
Ms. NLC Mojo S6119 B
S A V Net Worth 4200
ES W46
ESS63

Adj BW	Adj WW	Adj YW
87	591	1138
Adj Scrotal	WDA	116 Day Gain
37	3.05	3.45



LOTS 61 & 62 FULL BROTHERS BY UPGRADE!

62 ES GW46-3

CE SCORE



CE	BW	WW	YW	ADG	MCE	Milk	MWW	Stay	DOC	CW	YG	Marb	BF	REA	API	TI
13	1.0	72	107	.22	6	22	58	12	10.5	49.5	-.43	.23	-.098	1.09	122	74
						25	35			3	10		10	2		35

REG#3623127 • BD: 2/8/19 • Homo Black Homo Polled 3/4 SM 1/4 AN

Ellingson Legacy M229
Mr. NLC Upgrade U8676
Ms. NLC Mojo S6119 B
S A V Net Worth 4200
ES W46
ESS63

Adj BW	Adj WW	Adj YW
91	620	1043
Adj Scrotal	WDA	116 Day Gain
35	2.89	2.67

Red Simmental Bulls

**63 ES GA226-2**

CE	BW	WW	YW	ADG	MCE	Milk	MWW	Stay	DOC	CW	YG	Marb	BF	REA	API	TI
14	1.0	77	117	.25	5	10	48	17	7.1	45.0	-.51	.24	-.103	1.24	133	76
		15	15	25				35		10	2		4	1	35	25

Adj BW	Adj WW	Adj YW
85	623	1203
Adj Scrotal	WDA	116 Day Gain
35.9	3.24	3.66

Pedigree for Lots 63-64:
 Remington Lock N Load 54U
 ES Buckshot BT51-2
 EST51
 WS Beef King W107
 ES A226
 EIR T202

REG#3623035 • BD: 2/9/19 • **Red Baldy Homo Polled 5/8 SM 1/4 AR 1/8 AN**

Most early visitors through the bull pen have found one of these two bulls. We are going to make you come and look for yourself as to which one you like. GA226-1 is about a frame score taller and was the #4 gaining bull since weaning. GA226-2, the more moderate brother is extremely thick and has a lot of dark features around his eyes and hooves. Their mother, A226, is an absolute truck and was selected several years ago to carry on the T202 family. T202 was a Red Angus donor that hit it out of the park with any bull we mated her to. Didn't matter if it was Red Angus or Simmy. There are a lot of T202 genetics working in some awfully good cow herds.

64 ES GA226-1

CE	BW	WW	YW	ADG	MCE	Milk	MWW	Stay	DOC	CW	YG	Marb	BF	REA	API	TI
12	1.5	78	120	.26	6	13	52	17	11.6	45.1	-.40	.22	-.085	1.05	132	75
		10	10	20				30		10	10		15	2	35	25

Adj BW	Adj WW	Adj YW
81	648	1263
Adj Scrotal	WDA	116 Day Gain
34.7	3.39	3.88

**LOTS 63 & 64:
 FULL BROTHERS
 SONS OF ES BUCKSHOT**

REG#3623034 • BD: 2/5/19 • **Hetero Black Homo Polled 5/8 SM 1/4 AR 1/8 AN**

**65 ES GD112**

CE	BW	WW	YW	ADG	MCE	Milk	MWW	Stay	DOC	CW	YG	Marb	BF	REA	API	TI
6	2.9	77	119	.26	1	25	63	16	10.7	41.9	-.46	.09	-.102	1.07	113	71
		10	10	20		25	10			10	4		4	2		

REG#3623080
 BD: 3/24/19

**Red
 Homo Polled
 3/4 SM 1/8 AN
 1/8 AR**

Remington Lock N Load 54U
 ES EX75-1
 ES X75
 ES AU56-1
 ES D112
 ES Z72

Adj BW	Adj WW	Adj YW
101	636	1244
Adj Scrotal	WDA	116 Day Gain
34.7	3.35	3.84

This guy is a looker, you'd better have good fences when he goes to pasture, the neighbor's cows are all going to be trying to get in. He's not just another pretty face, he was the #6 high growing bull since weaning and his granddam has weaned 5 calves with a ratio of 108.

Sons of WS All Aboard

66 ES GB44



CE SCORE
★★★★

CE	BW	WW	YW	ADG	MCE	Milk	MWW	Stay	DOC	CW	YG	Marb	BF	REA	API	TI
16	-6	87	133	.29	8	18	61	13	12.6	52.3	-.39	.20	-.80	1.13	134	84
15	25	2	2	10	30		15		35	2	15		20	1	30	4

REG#3623053 • BD: 3/15/19 • Red Homo Polled 3/4 SM 1/4 AR

Tighten up the cinch here cowboys, this guy is flat good. He's been a standout all summer and fall, but we didn't realize how great he was til we looked at him on paper. He was the #1 WW bull ratioing 128 and the #2 WDA bull and went on to ratio 112 for YW. He did all that with a modest birth weight. It's easy to see why he deserves the ATM logo. The fascinating part is when you pull up the cow card and find out his dam has a low birth weight and high growth calf every year. She has had four calves with ratios of 113 for BW and 105 & 106 for WW & YW and has a nice udder to boot!



ES EB44, Maternal Brother



WS All-Around Z35
WS All Aboard B80
WS Little Sister W37
CDI Authority 77X
ES B44
EIR T202

Adj BW	Adj WW	Adj YW
89	781	1266
Adj Scrotal	WDA	116 Day Gain
38.9	3.62	3.06

67 ES GC212

CE SCORE
★★★★

CE	BW	WW	YW	ADG	MCE	Milk	MWW	Stay	DOC	CW	YG	Marb	BF	REA	API	TI
12	.2	80	127	.29	7	18	58	14	18.1	44.1	-.17	.29	-.059	.53	132	80
	10	4	10				30		1	10					35	10

REG#3623068
BD: 3/20/19

Red
Homo Polled
1/2 SM 1/2 AR

WS All-Around Z35
WS All Aboard B80
WS Little Sister W37
Pie The Cowboy Kind 343
EIR C212
EIR X211

Adj BW	Adj WW	Adj YW
80	592	1066
Adj Scrotal	WDA	116 Day Gain
33	2.97	3.02

If we cut his ear tag out and asked if he was a Red Angus or Simmy, you would have a 50/50 chance of being right. That's just how I would use him as a good RA bull but with a little Simmy for a kicker. Trouble-free, low birth weight genetic package and keep the heifers, his dam has a very nice udder.



68 ES GY204



CE SCORE
★★★★

CE	BW	WW	YW	ADG	MCE	Milk	MWW	Stay	DOC	CW	YG	Marb	BF	REA	API	TI
13	-.2	83	126	.27	8	12	53	20	18.8	44.9	-.18	.43	-.061	.55	155	84
	35	4	5	15	25			5	1	10			25	30	4	3

REG#3623149
BD: 4/4/19

Red
Homo Polled
1/2 SM 1/2 AR

WS All-Around Z35
WS All Aboard B80
WS Little Sister W37
Bieber Make Mimi 7249
EIR Y204
EIR W204

Adj BW	Adj WW	Adj YW
92	693	1272
Adj Scrotal	WDA	166 Day Gain
34.8	3.61	3.66



EIR EY204, Maternal Brother

Not sure why he didn't get in the picture pen, he was the #3 WDA and has some big time ratios for WW & YW at 113 and 112 and still ratioed over 100 for BW. He's a maternal brother to the good Red Angus bull Dar Everson bought in 2018. You gotta like your chances with a bull with 2 Right Choice Markers.

69 ES GX204

CE SCORE

★★★★

CE	BW	WW	YW	ADG	MCE	Milk	MWW	Stay	DOC	CW	YG	Marb	BF	REA	API	TI
13	-1.5	76	115	.24	7	16	53	14	18.1	44.7	-.22	.35	-.055	.71	136	80
	15	15	20	35	35				1	10			35	25	10	

WS All-Around Z35
 WS All Aboard B80
 WS Little Sister W37
 MLK CRK Cub 722
 EIR X204
 EIR U201

Adj BW	Adj WW	Adj YW
95	665	1176
Adj Scrotal	WDA	116 Day Gain
37.1	3.36	3.23

REG#3623136 • BD: 4/9/19 • Red Homo Polled 1/2 SM 1/2 AR

I don't want to insult anyone, but it won't take much of a cowboy to find this one. I would never pick him out to be an April bull in the pen. Just get him bought, and the day we pull in your yard with the trailer to drop him off, your cows will gather and be cheering much like when the Chiefs came back to KC after winning the Super Bowl. He's got the looks, he's got the data, read it for yourself.

**70 ES GW200**

CE SCORE

★★★★

CE	BW	WW	YW	ADG	MCE	Milk	MWW	Stay	DOC	CW	YG	Marb	BF	REA	API	TI
14	-.9	79	118	.24	9	10	49	15	18.3	39.9	-.19	.39	-.065	.49	143	82
	20	25	10	15	15				1	15		35	30		15	10

WS All-Around Z35
 WS All Aboard B80
 WS Little Sister W37
 Bieber Make Mimi 7249
 EIR W200
 EIR T226

Adj BW	Adj WW	Adj YW
90	584	1164
Adj Scrotal	WDA	116 Day Gain
36.3	3.22	3.66

REG#3623123 • BD: 3/16/19

Red Homo Polled
 1/2 SM 1/2 AR

All Aboard was one of our go to bulls when breeding Red Angus cows. We believe our goal was met making solid, functional, multipurpose cattle that can work in the real world. His dam has been exceptional, of her 9 calves, 4 heifers are still in herd and 4 bulls have averaged over \$6,000. We will find out what #5 does on March 6. With the predictability of his cow family and data to back it up, he should hold his own.

**71 ES GD216**

CE SCORE

★★★★

CE	BW	WW	YW	ADG	MCE	Milk	MWW	Stay	DOC	CW	YG	Marb	BF	REA	API	TI
11	.0	83	128	.28	7	16	57	17	18.3	33.7	-.19	.33	-.030	.68	139	82
		4	4	10			35	35	1	35					20	10

REG#3623085
BD: 3/31/19

Red
 Homo Polled
 1/2 SM 1/2 AR

WS All-Around Z35
 WS All Aboard B80
 WS Little Sister W37
 Beckton Epic R397 K
 EIR D216
 EIR T212

Adj BW	Adj WW	Adj YW
80	648	1176
Adj Scrotal	WDA	116 Day Gain
37.8	3.24	3.36

Rock solid bull that needs a good home, whoever ends up with him, consider yourself fortunate. He's a big spread bull from birth to yearling, having a BW ratio of 114 then WW & YW EPDs in the top 4% of the breed. Also carries the ATM logo which is an indicator of growth traits in his DNA.

WS All-Around Z35, Paternal Grandsire

72 ES GD89

CE SCORE



CE	BW	WW	YW	ADG	MCE	Milk	MWW	Stay	DOC	CW	YG	Marb	BF	REA	API	TI
10	2.6	95	144	.31	6	13	60	15	16.1	50.0	-.33	.28	-.056	1.10	132	85
		1	1	3			20		4	3	25			1	35	3

REG#3623096
BD: 3/15/19

Red
Homo Polled
3/4 SM 1/4 AR

WS All-Around Z35
WS All Aboard B80
WS Little Sister W37
ES Authorized BT202-2
ES D89
ES A17

Adj BW	Adj WW	Adj YW
106	607	1173
Adj Scrotal	WDA	116 Day Gain
37.7	3.14	3.58



ES F25, Maternal Sister

All around nice bull with a pedigree that would indicate more performance. His grandam, A17, is a donor that had 2 powerful bulls in last year's sale, both going to Greg Wettlaufer in Winfred. His pedigree says growth, but his best attribute may be replacement females, we gave his dam a score of 9+ on udder last spring and look at his maternal sister, ES F25 (Lot 135).

73 ES GA215

CE SCORE



CE	BW	WW	YW	ADG	MCE	Milk	MWW	Stay	DOC	CW	YG	Marb	BF	REA	API	TI
15	.2	87	133	.29	10	11	55	14	15.6	39.5	-.33	.29	-.060	.94	138	84
20		2	2	10	10				10	15	25			10	20	3

REG#3623033 • BD: 3/21/19

Red Homo Polled
1/2 SM 1/2 AR

I wrote down "no holes" on this guy when evaluating in the pen. It's awesome when the visual appraisal and the data on paper match, no holes! He ratioed very well with BW & WW both at 107 and YW at 105.

WS All-Around Z35
WS All Aboard B80
WS Little Sister W37
Messmer Packer S008
EIR A215
EIR U203

Adj BW	Adj WW	Adj YW
87	651	1195
Adj Scrotal	WDA	116 Day Gain
38.2	3.37	3.45

74 ES GY15

CE SCORE



CE	BW	WW	YW	ADG	MCE	Milk	MWW	Stay	DOC	CW	YG	Marb	BF	REA	API	TI
14	2.3	82	125	.27	8	12	53	15	12.6	36.6	-.49	.08	-.106	1.07	133	78
10		10	5	10	15				25	20	35			10	30	10

REG#3623147 • BD: 3/14/19 • Red Homo Polled Purebred

DCR Mr Moon Shine X102
TNT Red Eye A212
TNT Miss Y32
WS Beef King W107
ES Y15
EST21

Adj BW	Adj WW	Adj YW
96	678	1201
Adj Scrotal	WDA	116 Day Gain
38.7	3.35	3.28

The Y15 cow is no stranger to bringing home a good one. Several of her sons have been highlights in the red division in past sales. Made from the same mold as his siblings. He is a true meat wagon, thick, wide based, yet with a touch of class. He has a WW ratio of 111 and YW ratio of 106. His maternal sister is a donor for Quandt Brothers in North Dakota.



ES DY15, Maternal Brother



ES E115, Maternal Sister





TNT Red Eye A212, Sire

75 ES GY203



CE SCORE



CE	BW	WW	YW	ADG	MCE	Milk	MWW	Stay	DOC	CW	YG	Marb	BF	REA	API	TI
12	.8	67	106	.25	8	18	51	16	17.0	33.5	-.17	.25	-.059	.39	127	70
			35	25	20				3	35						

REG#3623148
BD: 3/19/19Red
Homo Polled
1/2 SM 1/2 ARDCR Mr. Moon Shine X102
TNT Red Eye A212
TNT Miss Y32
MLK CRK Cub 722
EIR Y203
EIR W200

Adj BW	Adj WW	Adj YW
111	644	1202
Adj Scrotal	WDA	116 Day Gain
33.9	3.38	3.53



ES FY203, Maternal Brother

He is probably geared towards those that want to increase performance. He's a long sided bull with WW & YW ratios of 105 and 106. Sired by Red Eye, an outcross bull that would be new blood for old customers.



ES F21, Maternal Sister

76 ES GD65



CE SCORE



CE	BW	WW	YW	ADG	MCE	Milk	MWW	Stay	DOC	CW	YG	Marb	BF	REA	API	TI
16	-1.0	67	103	.22	9	23	57	16	14.6	49.2	-.36	.02	-.089	.94	124	68
	10	20			10				15	3	20		15	10		

REG#3623094
BD: 3/12/19Red
Homo Polled
3/4 SM 1/4 ARDCR Mr. Moon Shine X102
TNT Red Eye A212
TNT Miss Y32
WS Beef King W107
ES D65
EIR Y206

Adj BW	Adj WW	Adj YW
77	597	1156
Adj Scrotal	WDA	116 Day Gain
34.1	3.11	3.53

Wade Shafer has been telling us that in the new era of technology, data is "king" and that's why we collect it. Without the data I probably wouldn't have guessed a Red Eye son to have the Right Choice CE logo "ACE". But when you analyze the data, it makes sense. Birth Weight ratio of 118, dam's BW ratio of 116 and two of her calves with a BW ratio of 119 with no outliers. Long story short, 4-star CE...check out his maternal sister, ES F21 (Lot 137).

77 ES GC207

CE SCORE



CE	BW	WW	YW	ADG	MCE	Milk	MWW	Stay	DOC	CW	YG	Marb	BF	REA	API	TI
15	.6	66	111	.28	9	29	62	14	15.3	44.4	-.17	.03	-.051	.58	117	66
	20		25	10	15	10	15		10	10						

REG#3623067 • BD: 4/14/19
Red Homo Polled
1/2 SM 1/2 AR

He's not the biggest bull in the pen today but give this young April bull a couple of months and it will be a different story. His sire, TNT Red Eye, has done an excellent job for Doug Bichler in N.D., we brought him in as an outcross bull and had 6 sons in last year's sale that were received very well.

DCR Mr. Moon Shine X102
TNT Red Eye A212
TNT Miss Y32
Pie The Cowboy Kind 343
EIR C207
EIR T223

Adj BW	Adj WW	Adj YW
87	521	1057
Adj Scrotal	WDA	116 Day Gain
33.8	2.98	3.41

78 ES GC75



CE SCORE



CE	BW	WW	YW	ADG	MCE	Milk	MWW	Stay	DOC	CW	YG	Marb	BF	REA	API	TI
13	1.7	76	114	.24	8	14	51	15	15.5	31.5	-.35	.15	-.085	.70	123	72
	15	20	35	25					10	20		15	35			

REG#3623076 • BD: 3/11/19
Red Homo Polled
3/4 SM 1/4 AR

There's some longevity in this pedigree, her grandam is a 13-year-old Red Angus cow that is a workhorse. You don't get a chance to get that old around here without carrying your weight. Her pedigree trickles down through several in the offering.

DCR Mr. Moon Shine X102
TNT Red Eye A212
TNT Miss Y32
WS Beef King W107
ES C75
EIR T217

Adj BW	Adj WW	Adj YW
87	604	1054
Adj Scrotal	WDA	116 Day Gain
34.5	2.95	2.84



79 ES GC101

CE SCORE



R Plus Hard Rock 145X
Ellingson Complete A358
Ellingson Ms. Amigo X5
CDI Authority 77X
ES C101
EIR T202

Adj BW	Adj WW	Adj YW
119	672	1198
Adj Scrotal	WDA	116 Day Gain
40.6	3.34	3.32

CE	BW	WW	YW	ADG	MCE	Milk	MWW	Stay	DOC	CW	YG	Marb	BF	REA	API	TI
6	4.5	85	125	.25	3	15	57	14	15.2	46.3	-.39	-.03	-.090	1.00	101	68
		2	10	25			35		10	5	15		15	4		

REG#3623061 • BD: 3/13/19 • **Red Homo Polled 3/4 SM 1/4 AR**

Out of the same mold as GB44 (Lot 66), their dams are full sisters and its easy to see the similarity and high probability they will be in the same pen sale day. Use this guy to add pay weight and \$ in your pocket sale day as indicated by his ATM logo. He ratioed 110 for WW and 106 for YW. His sire is a bull we brought in for some outcross genetics.

**80 ES GX225**

CE SCORE



CE	BW	WW	YW	ADG	MCE	Milk	MWW	Stay	DOC	CW	YG	Marb	BF	REA	API	TI
3	2.6	67	102	.22	0	25	58	18	11.4	27.6	-.20	.04	-.040	.55	105	61
						25	30	20								

REG#3623138
BD: 3/20/19

Red
Homo Polled
1/2 SM 1/2 AR



ES EX225, Full Brother

NF Trump S582
CDI Authority 77X
CDI Ms. Crockett 88T
OHRR Dakota Copper 29K
EIR X225
EIR S217

Adj BW	Adj WW	Adj YW
106	617	1121
Adj Scrotal	WDA	116 Day Gain
37	3.16	3.19

The Authority X Red Angus pedigree is a time tested proven combination that works. We have many females in production and couldn't be happier. Seems like Authority adds a little more bone and muscle to the Red Angus and the commercial guys love them. He has a little more skeletal dimension than some of his pen mates. Can't wait to get them penned up sale day.

**81 ES GX210**

CE SCORE



CE	BW	WW	YW	ADG	MCE	Milk	MWW	Stay	DOC	CW	YG	Marb	BF	REA	API	TI
10	.6	62	92	.18	4	17	48	16	11.7	28.9	-.12	.01	-.11	.53	108	60

REG#3623137
BD: 3/14/19

Red
Homo Polled
1/2 SM 1/2 AR



ES FX210, Maternal Brother

NF Trump S582
CDI Authority 77X
CDI Ms. Crockett 88T
OHRR Dakota Copper 29K
EIR X210
EIR L211

Adj BW	Adj WW	Adj YW
85	654	1151
Adj Scrotal	WDA	166 Day Gain
36.7	3.24	3.15

When you get a chance to buy a bull out of a good cow, do it. After 9 calves we decided to keep her open last year to do some ET work. She is so consistent her four heifer calves have all been retained as replacements. Not only did all the bulls make the sale, but they all made the picture pen. This guy can stand on his own merit ratioing 109 for BW, then 107 for WW. Big spread bulls are hard to come by.



82 ES GC72

CE SCORE



CE	BW	WW	YW	ADG	MCE	Milk	MWW	Stay	DOC	CW	YG	Marb	BF	REA	API	TI
10	2.5	88	139	.32	5	17	61	20	13.5	57.3	-.33	.06	-.098	.87	129	76
		1	1	2			15	10	20	1	25		10	10		20

REG#3623075 • BD: 4/2/19 • Red Homo Polled 3/4 SM 1/8 AN 1/8 AR

GW Carry On Z0219
WS Outcross C164
WS Aurora Z235
CDI Authority 77X
ES C72
ES Z87

Adj BW	Adj WW	Adj YW
106	712	1390
Adj Scrotal	WDA	116 Day Gain
36.2	3.84	4.27



Just own him!! When the #1 gaining WDA and YW bull of the offering comes up for sale, just raise your hand til you own him. On the red side we couldn't write a better pedigree for the cow, Authority X Beef King X T202. His young dam, C72, is writing her own chapter as a descendant of T202. Her Bulletproof son garnered more calls than any other bull we had in the offering last year, he was nice, but he didn't have the performance this dude has. C72 now has WW ratios of 106 and YW of 116 on her calves.



ES FC72, Maternal Brother

83 ES GB17

CE SCORE



CE	BW	WW	YW	ADG	MCE	Milk	MWW	Stay	DOC	CW	YG	Marb	BF	REA	API	TI
17	-.1	81	125	.28	11	22	62	19	11.7	29.4	-.49	.25	-.104	.97	148	82
10	35	5	5	10	4		15	15			3		4	5	10	10

REG#3623042 • BD: 4/7/19

Red Homo Polled
3/4 SM 1/8 AN 1/8 AR

We brought in the WS Outcross to do just what his name implies, outcross genetics. We feel GB17 would be an excellent choice for calving ease with just a little performance with WW & YW EPDs being in the top 5% of the breed, also the Right Choice markers tagged him with a G+ and the ACE markers for calving ease. Great pedigree on the bottom side, his great grandam is our T202 Red Angus donor.

GW Carry On Z0219
WS Outcross C164
WS Aurora Z235
Hooks Shear Force 38K
ES B17
ES Z87

Adj BW	Adj WW	Adj YW
85	650	1094
Adj Scrotal	WDA	116 Day Gain
36	3.13	2.80

**84 ES GE55**

CE SCORE



CE	BW	WW	YW	ADG	MCE	Milk	MWW	Stay	DOC	CW	YG	Marb	BF	REA	API	TI
16	-1.2	69	99	.18	9	19	54	19	10.7	25.9	-.20	.21	-.043	.51	138	73
15	20	35			15			15							20	35

REG#3623115
BD: 2/20/19

Red
Homo Polled
3/4 SM 1/4 AR

Hook's Xpectation 36X
CDI Perspective 238A
CDI Ms. Trump 101Y
WS Beef King W107
ES E55
EIR T217

Adj BW	Adj WW	Adj YW
87	554	1138
Adj Scrotal	WDA	116 Day Gain
38.5	2.88	3.71

Let's say this guy uses up his share of the bunk space at feeding time, he's a wide load. These Perspective's really calve well and look to make some nice cows. He also cracked the top 10 barriers on gain since weaning. He is dark cherry red with black hooves.

85 ES GE73

CE SCORE



CE	BW	WW	YW	ADG	MCE	Milk	MWW	Stay	DOC	CW	YG	Marb	BF	REA	API	TI
14	-9	78	118	.25	8	26	65	18	9.9	38.6	-.36	.34	-.080	.87	157	87
10	10	15	15	20	10	15	10			15		3			2	1

REG#3623120 • BD: 2/25/19 • Red Homo Polled Purebrd

He's got so much to offer I'm not sure where to start. His physical presence, he is nice profiling with a great top, but you really don't appreciate him for what he is until you get behind him and see him on the move. His actuals, he ratioed 115 for WW and 107 for YW and has a large scrotal. His EPDs, he's in the top 20% of the breed in 12 categories. Right Choice program, he has been tagged in 2 categories G+ & ATM, he'll be a money making machine. Pedigree, his dam has 2 natural maternal sisters that are in our ET program. In a nutshell, he's a heck of a good beef bull.



Hook's Xpectation 36X
 CDI Perspective 238A
 CDI Ms. Trump 101Y
 CDI Abundance 391C
 ES E73
 ES Z85

Adj BW	Adj WW	Adj YW
93	700	1218
Adj Scrotal	WDA	116 Day Gain
40.2	3.17	3.28

86 ES GE68

CE SCORE



CE	BW	WW	YW	ADG	MCE	Milk	MWW	Stay	DOC	CW	YG	Marb	BF	REA	API	TI
11	.0	75	106	.20	5	13	50	15	10.1	49.3	-.36	.08	-.096	.90	117	71
		15	35							3	20		10	10		

REG#3623118
BD: 3/10/19Red
Homo Polled
3/4 SM 1/4 AN

Hook's Xpectation 36X
 CDI Perspective 238A
 CDI Ms. Trump 101Y
 WS Beef King W107
 ES E68
 EIR W200

Adj BW	Adj WW	Adj YW
105	552	1150
Adj Scrotal	WDA	116 Day Gain
37.4	2.97	3.79



I'll be honest with his pedigree we should be talking heifer bull, I'm not sure where his birth weight came from. So, let's just not use him on heifers and I will guarantee he will be just fine. He is a moderate sized bull with plenty of rib and impeccable structure. He's coming on strong being the 8th highest gaining bull since weaning.

87 ES GE60

CE SCORE



CE	BW	WW	YW	ADG	MCE	Milk	MWW	Stay	DOC	CW	YG	Marb	BF	REA	API	TI
20	-2.8	68	102	.21	9	22	56	13	8.6	26.3	-.17	.24	-.020	.60	137	75
2	5				15										25	25

REG#3623117 • BD: 2/16/19

Red Homo Polled
3/4 SM 5/32 AR 3/32 AN

Hook's Xpectation 36X
 CDI Perspective 238A
 CDI Ms. Trump 101Y
 Leachman Cadillac L025A
 ES E60
 ES Z59

Adj BW	Adj WW	Adj YW
69	529	984
Adj Scrotal	WDA	116 Day Gain
32.2	2.49	2.89

After we ran the bulls through the Right Choice program, we decided to put a few of these designated CE or "ACE" approved bulls in the offering for your appraisal. They have identified several DNA markers that are tied directly to birth weight of calves and through DNA and Genomic testing, if these markers don't show up, the risk of having outliers with big birth weights is less and those are the individuals that get the "ACE" logo.

88 ES GB34-2

CE SCORE ★

CE	BW	WW	YW	ADG	MCE	Milk	MWW	Stay	DOC	CW	YG	Marb	BF	REA	API	TI
8	2.8	77	125	.30	4	33	72	18	12.5	57.1	-.51	.28	-.125	1.21	142	81
		20	5	2		1	1	35	25	1	25	10	20	2	10	4

Adj BW	Adj WW	Adj YW
116	656	1207
Adj Scrotal	WDA	116 Day Gain
38	3.24	3.45

Pedigree for Lots 88-89:

CDI Hometown 246A

CDI Abundance 391C

CDI Ms. Beef King 74Z

Remington Lock N Load 54U

ES B34

ES X75

REG#3623049 • BD: 2/12/19 • Red Homo Polled Purebred



**LOTS 88 & 89:
TWO FULL
BROTHERS
BY CDI
ABUNDANCE**



Let's just call it as it is, these two are not being offered as heifer bulls. Now we got that out of the way, you guys are really going to like these two bulls when you see them. Use them on cows you'll be fine and two years from now when your feeder calves go to the sale barn, you'll be laughing all the way to the bank. The only way it could be better is if you keep the heifers back for replacements. Two years ago, we offered a set of Abundance sired bulls and you liked them so much we felt what better way to bring him back than use him on one of our best red donors.

89 ES GB34-3

CE SCORE ★

CE	BW	WW	YW	ADG	MCE	Milk	MWW	Stay	DOC	CW	YG	Marb	BF	REA	API	TI
7	3.0	80	130	.31	4	27	67	16	11.5	55.7	-.53	.18	-.123	1.29	133	80
		10	3	2		15	4		35	1	20	15	20	1	30	10

REG#3623050

BD: 2/15/19

**Red
Homo Polled
Purebred**

Adj BW	Adj WW	Adj YW
108	657	1256
Adj Scrotal	WDA	116 Day Gain
33.2	3.35	3.75

90 ES GZ200

CE SCORE ★★

CE	BW	WW	YW	ADG	MCE	Milk	MWW	Stay	DOC	CW	YG	Marb	BF	REA	API	TI
13	-.4	70	112	.26	9	28	63	19	12.9	41.0	-.18	.44	-.033	.73	149	79
	30	30	25	20	20	10	10	10	30	15	25	30	30	10	15	

CDI Hometown 246A
CDI Abundance 391C
CDI Ms. Beef King 74Z
HXC Conquest 4405P
EIR Z200
EIR X210

Adj BW	Adj WW	Adj YW
84	673	1203
Adj Scrotal	WDA	116 Day Gain
39.4	3.45	3.36

REG#3623156 • BD: 4/12/19
Red Homo Polled
1/2 SM 1/2 AR

ES FZ200, Maternal Brother

Much like his brothers that have sold in the past, he offers some stretch and growth that allows him to be one of the top ADG bulls. He's an amazing spread bull rationing 110 for BW then excelling to ratio 110 for WW. His grandam was chosen to spend a year in our donor pen last year because of her consistent production. The CDI Abundance cattle have been very well received in past sales.



91 ES GT224CE SCORE
★★★

CE	BW	WW	YW	ADG	MCE	Milk	MWW	Stay	DOC	CW	YG	Marb	BF	REA	API	TI
9	3.0	76	123	.30	5	24	61	19	11.4	45.9	-.47	.45	-.097	1.18	143	80
		15	10	4		35	15	15		5	4	25	10	1	15	10

REG#3623122
BD: 4/6/19Red
Homo Polled
3/4 SM 1/4 AR

CDI Hometown 246A
CDI Abundance 391C
CDI Ms. Beef King 74Z
LBR Crockett R81
EST 224
EIR N206

Adj BW	Adj WW	Adj YW
95	554	1082
Adj Scrotal	WDA	116 Day Gain
37.1	3.07	3.32

His dam is 13 years old and we still score her udder above average and is structurally very sound. A lot of her progeny over the years have gone through this sale.

ES ET224, Maternal Brother

**92 ES GE128**CE SCORE
★★★★

CE	BW	WW	YW	ADG	MCE	Milk	MWW	Stay	DOC	CW	YG	Marb	BF	REA	API	TI
14	-.8	70	110	.25	6	21	56	15	16.4	16.6	-.12	.04	-.008	.42	120	69
		25	25	25		25			4							

REG#3623103
BD: 2/7/19Red
Homo Polled
1/2 SM 7/16 AR
1/16 AN

Hooks Trinity 9T
Leachman Cadillac L025A
Rempe Stabilizer YD032
CDI Authority 77X
ES E128
EIR T212

Adj BW	Adj WW	Adj YW
80	548	1077
Adj Scrotal	WDA	116 Day Gain
32.8	2.74	3.36

We feel folks will really appreciate this guy for how bold he is through his middle 1/3. His grandam is T212, a tremendously wide made Red Angus cow we have done some embryo work with. His sire, Cadillac, is a bull we have been using for several years on heifers, because he works. The bonus is we scored his mother very high on udder quality.

**93 ES GE5**CE SCORE
★★★★★

CE	BW	WW	YW	ADG	MCE	Milk	MWW	Stay	DOC	CW	YG	Marb	BF	REA	API	TI
16	-1.7	68	104	.23	8	27	61	18	10.2	23.9	-.13	.44	-.17	.47	151	79
		15	15			20	15	20	20			25			10	15

REG#3623114
BD: 3/6/19Red
Homo Polled
1/2 SM 7/16 AR
1/16 AN

Hooks Trinity 9T
Leachman Cadillac L025A
Rempe Stabilizer YD032
WS Beef King W107
ES E5
EIR T212

Adj BW	Adj WW	Adj YW
77	531	1026
Adj Scrotal	WDA	116 Day Gain
36.2	2.67	3.15

A calving ease deluxe here, he physically looks like a CE bull, long sided, with smooth joints and a small CE looking head. The data supports it also, with a 77 lb. BW and EPDs that are very favorable and to top it off, he came back with DNA markers to give him the ACE logo on the Right Choice program.

**94 ES GD111**CE SCORE
★★★

CE	BW	WW	YW	ADG	MCE	Milk	MWW	Stay	DOC	CW	YG	Marb	BF	REA	API	TI
7	2.2	79	121	.26	3	24	64	21	17.5	41.0	-.31	.24	-.050	.98	134	76
		10	10	20		35	10	2	2	15	30			4	30	25

REG#3623079
BD: 3/11/19Red Homo Polled
5/8 SM 1/4 AR
1/8 AN

GW Movin On 183C
GW Major Move 590E
GW Miss Predestined 147Y
ES ZX75
ES D111
EIR X226

Adj BW	Adj WW	Adj YW
106	598	1156
Adj Scrotal	WDA	166 Day Gain
38	3.12	3.53

We are extremely curious to see what your thoughts are on this guy. He's been one of my favorites all summer with his soft structure and big belly or maybe it was his markings that make him unique. No matter how you look at it, he's a pretty cool individual. Want to get a sneak peek at what the females could look like, check out ES F1 (Lot 134) his maternal sister. His sire, Major Move, was a crowd favorite in the 2018 Gateway Sale.



ES F1, Maternal Sister

**95****ES GD127**

CE SCORE

★★★★★

CE	BW	WW	YW	ADG	MCE	Milk	MWW	Stay	DOC	CW	YG	Marb	BF	REA	API	TI
14	-6	78	119	.26	9	19	57	23	15.3	29.1	-.32	.21	-.053	.83	149	78
25	25	10	15	20	20		35	1	10		30			15	10	15

REG#3623083
BD: 3/12/19Red
Homo Polled
5/8 SM 1/4 AR
1/8 ANGW Movin On 183C
GW Major Move 590E
GW Miss Predestined 147Y
WS Beef King W107
ES D127
EIR T202

Adj BW	Adj WW	Adj YW
80	606	1054
Adj Scrotal	WDA	116 Day Gain
32.6	2.91	2.84



ES FD127, Maternal Brother

This long sided, smooth made bull is going to come highly recommended for calving ease. His DNA has markers that indicated he deserves the ACE logo for CE, but he's more than just a CE bull, he received the G+ logo also. A maternal brother purchased by Elton Stoebner was a favorite of mine last year. His EPDs don't over-power you in any one category but he's awfully good in a lot of them.

Red Angus Bulls

96**EIR GE200**

CE SCORE

★★★★★

CE	BW	WW	YW	Milk	Stay	MA	RE	BF
16	-2.6	66	109	24	14	.59	.08	.05
13	24	17	11			12	35	

REG#4151318 • BD: 2/16/19 • Purebred Red Angus

Andras Fusion R236
Bieber CL Atomic C218
Bieber Dateline 308Y
Brown AA Sensational B5147
EIR E200
EIR C201

Adj BW	Adj WW	Adj YW
86	645	1378
Adj Scrotal	WDA	126 Day Gain
38.8	3.36	4.57



ES FC201, Grandam's Son



History has been made, never at ES has a straight Red Angus been the top gaining bull overall. Cathy thought the scale was broke or got written down wrong, so we weighed him again, same result. What a statement this 1st calf heifer is making. After a little research it's no fluke, his grandam had a Simmental sired calf that was #1 out of 87 contemporaries in last year's sale. It goes without saying his individual data takes him right to the leader board in many categories in the Red Angus division. You're going to like him when you see him.

97 EIR GT2122

CE SCORE

★★★

CE	BW	WW	YW	Milk	Stay	MA	RE	BF
12	-1.0	64	102	24	19	.36	.17	.06
		24	25		15		19	

REG#4151316
BD: 2/15/19Purebred
Red Angus

Bieber Roosevelt W384
Bieber Rollin Deep Y118
Bieber Tilly 399W
Glacier Chateau 744
EIR T212
EIR P211

Adj BW	Adj WW	Adj YW
72	607	1041
Adj Scrotal	WDA	126 Day Gain
36	2.84	2.72

He's a very deep chested, soggy middle individual who is a direct son of our good donor T212. Besides being a donor off and on the last few years, she has weaned 9 natural calves with a ratio of 105. We were hoping for several full brothers to offer but only had 1 bull born last year.

**98 EIR GA216**

CE SCORE

★★★

CE	BW	WW	YW	Milk	Stay	MA	RE	BF
15	-3.9	65	100	27	18	.43	.02	.03
14	8	21	29	17	28			

REG#4151322
BD: 3/9/19Purebred
Red Angus

Bieber Rouse Samurai X22
Bieber Spartacus A193
Bieber Tilly 233U
PZC TMAS Firestorm 1800 ET
EIR A216
EIR T212

Adj BW	Adj WW	Adj YW
72	621	1090
Adj Scrotal	WDA	126 Day Gain
31.4	2.99	2.93

With a pedigree like Spartacus X Firestorm you can't help but look like a stud like this guy, it's meant to be. We appreciate his -4 BW EPD and the consistent low birth weight of his mother's calves, four @ 83#, keep in mind on birth weight ratio, Red Angus BW ratio is different than Simmentals, you want a lower number, so this guys ratio would be similar to Simmental with a 117 BW ratio. I know, why can't they all be the same. Also note his grandam, T212, we've had her in the donor pen.

**99 EIR GU203**

CE SCORE

★★★

CE	BW	WW	YW	Milk	Stay	MA	RE	BF
10	.4	73	116	25	17	.54	.13	.03
		4	5			18	25	

REG#4151330
BD: 3/18/19Purebred
Red Angus

Bieber Rouse Samurai X22
Bieber Spartacus A193
Bieber Tilly 233U
Bieber Make Mimi 7249
EIR U203
EIR S216

Adj BW	Adj WW	Adj YW
101	647	1174
Adj Scrotal	WDA	126 Day Gain
35	3.17	3.28

Probably the larger framed of the three Spartacus sons in the sale and #2 gaining RA bull since weaning. I know there's only five RA bulls which is the rest of the story as Paul Harvey would say, but you must remember who #1 is, being #2 is quite an accomplishment. His WW & YW EPDs are in the top 5% of the breed. His 12 year old Make Mimi dam has been a pillar of stayability bringing home 10 calves with a WW ratio of 105.

**100 EIR GB209**

CE SCORE

★★★

CE	BW	WW	YW	Milk	Stay	MA	RE	BF
14	-2.7	70	110	26	16	.55	.11	.04
29	23	9	11	22		17	29	

REG#4151340
BD: 3/28/19Purebred
Red Angus

Bieber Rouse Samurai X22
Bieber Spartacus A193
Bieber Tilly 233U
HXC Conquest 4405P
EIR B209
EIR T202

Adj BW	Adj WW	Adj YW
88	666	1177
Adj Scrotal	WDA	126 Day Gain
33	3.25	3.19

We don't have a lot of numbers to offer in the Red Angus division, but we feel the ones we have are pretty good. I'll be honest, we really like the Simmy/Red Angus F1, so a lot of our Red Angus cows are mated to PB Simmental bulls. GB209 is a royally bred bull, that traces back to the T202 cow, there's a lot of calving ease on the bottom side with Make Mimi and Conquest both having been used on heifers very successfully. Then look at his WW & YW EPDs, top 10% of the breed.



JK Angus Bulls

101 JK Element 918

REG#19411931

BD: 1/3/19

Purebred Angus

CED	BW	WW	YW	MM
+8	-1.1	+63	+98	+24
35	10	25		

Thick, moderate framed grandson of 4M Element. Use on heifers or cows.

4M Element 405
 Varilek Element 7112 03
 Varilek Rose 4044 412
 J&J Weigh Up 294
 JK Star Gene 764
 J & J Star Gene 281

BW	Adj WW	Adj YW
71	696	1187
Scrotal		
37		

102 JK Element 953

REG#19412793

BD: 1/14/19

Purebred Angus

CED	BW	WW	YW	MM
+6	+5	+61	+103	+29
35	30	20		

Grandson of 4M Element. His grandam and great-grandam are both Pathfinder cows. He will sire high maternal cattle. Use on heifers or cows.

4M Element 405
 Varilek Element 7112 03
 Varilek Rose 4044 412
 S A Romeo 1202
 JK Soldierette 723
 J K Soldierette 138

BW	Adj WW	Adj YW
74	640	1122
Scrotal		
36.5		

103 JK High Point 992

REG#19412828

BD: 1/31/19

Purebred Angus

CED	BW	WW	YW	MM
+9	+6	+57	+110	+29
30	35	25	20	

Low birth weight son of Ring of Fire out of a real good Mogck Bullseye daughter. Use on heifers or cows.

Vin-Mar Johnny Cash 3513
 High Point Ring of Fire 5071
 High Point Blackbird 3009
 Mogck Bullseye
 JK Blackbird 6104
 J K Blackbird 752

BW	Adj WW	Adj YW
78	655	1250
Scrotal		
37		

104 JK High Point 9117

REG#19412850

BD: 3/13/19

Purebred Angus

CED	BW	WW	YW	MM
+13	-.37	+74	+131	+33
10	15	5	5	10

Another low birth weight son of Ring of Fire with a 13 CED. Use on heifers or cows.

Vin-Mar Johnny Cash 3513
 High Point Ring of Fire 5071
 High Point Blackbird 3009
 KF Upward 1710
 J & J Miss Star 298
 J&J Miss Star 928

BW	Adj WW	Adj YW
78	741	NA
Scrotal		
36		

105 JK High Point 9123

REG#19412856

BD: 3/26/19

Purebred Angus

CED	BW	WW	YW	MM
+8	+1.6	+64	+115	+27
35	20	20	35	

Ring of Fire son out of one of our good cow families. Use on larger heifers or cows.

Vin-Mar Johnny Cash 3513
 High Point Ring of Fire 5071
 High Point Blackbird 3009
 S A One Way 298
 J K Gammer 283
 Mohnen Gammer 455

BW	Adj WW	Adj YW
78	758	NA
Scrotal		
36.5		



The Female Offering



106 ES F147

REG#3481591 • BD: 2/8/18 • **Homo Black Baldy Homo Polled Purebred**

CE	BW	WW	YW	ADG	MCE	Milk	MWW	Stay	DOC	CW	YG	Marb	BF	REA	API	TI
8	1.1	70	96	.17	1	18	53	17	13.4	38.9	-.42	.00	-.084	1.04	119	69
35									15	10				10		

Adj BW	Adj WW
83	650

LOT 106A: BULL CALF AT SIDE

Sire: TJ Main Event 503B • BD: 2/10/20 • BW: 81

Est EPDs: 11 .5 78 113 .22 3 25 64 15 14.1

Carcass: 40.85 -.40 .12 -.09 .98 120 74

107 ES F150

REG#3481593 • BD: 2/9/18 • **Homo Black Baldy Homo Polled Purebred**

CE	BW	WW	YW	ADG	MCE	Milk	MWW	Stay	DOC	CW	YG	Marb	BF	REA	API	TI
10	1.3	71	98	.17	2	19	55	17	12.9	30.0	-.46	-.11	-.083	1.06	117	67
									20					10		

Adj BW	Adj WW
77	597

AI Sire: TJ Heisman 388F on 5/5/19

Due 2/12/20

Est PM EPDs: 12 .3 76 109 .21 6 22 60 19 12.0

Carcass: 35.15 -.35 .18 -.07 .89 143 79

Pasture Sire: CCR Wichita 4069D from 6/26 to 7/18/19

Pedigree for Lots 106-107:

WS Pilgrim H182U
TKCC Carver 65C
Ford RJ Dolly Y83
Remington Lock N Load 54U
ES A117
ESU56

These two baldies will get your blood pumping. They are the product of a very uniform flush of TKCC Carver's out of the A117 donor, a full sister to our A110 donor. We sold a full sister in the SD Source sale in 2018 that went to Lehman Family Simmental. All the A117 sons were very well received in last year's spring bull sale. The biggest decision you may have is do you want the one with a TJ Main Event calf or a TJ Heisman calf at side. Personally, I don't feel you can go wrong either way, or maybe just hedge your bet and tie them both together.

ES F148, Full Sister



108 ES F54REG#3481687 • BD: 3/9/18 • **Homo Black Hetero Polled 3/4 SM 1/4 AN**

Adj BW	Adj WW
87	707

LOT 108A: HEIFER CALF AT SIDE

Sire: Hook's Encore 65E • BD: 2/10/20 • BW: 86
 Est EPDs: 11 .25 71 98 .18 6 21 56 16 11.9
 Carcass: 24.8 -.47 .28 -.07 1.11 139 78

CE	BW	WW	YW	ADG	MCE	Milk	MWW	Stay	DOC	CW	YG	Marb	BF	REA	API	TI
8	.9	72	93	.14	1	17	52	14	8.0	30.0	-.41	.02	-.065	1.04	105	66
		25									10		30	3		



WS Pilgrim H182U
 TKCC Carver 65C
 Ford RJ Dolly Y83
 ES Power Up XS37
 ES Z40
 ESU21

I'm sure a few cowboys will find this girl on sale day. Her huge sweeping rib cage is like a magnet. We chose Hook's Encore for calving ease, but the choice is yours next year.

**109 ES F141**

CE	BW	WW	YW	ADG	MCE	Milk	MWW	Stay	DOC	CW	YG	Marb	BF	REA	API	TI
7	.0	59	78	.12	1.0	23	52	17	12.8	29.6	-.37	.05	-.070	.88	107	61
									30		15		30	10		

REG#3444948
 BD: 2/12/18

Homo Black
Homo Polled
3/4 SM 1/4 AN

Adj BW	Adj WW
79	559

TKCC Carver 65C
 ES B101
 WS Pilgrim H182U
 Ford RJ Dolly Y83
 B C Lookout 7024
 Frankes/MPC Night Dreams

AI Sire: TJ Heisman 388F on 5/11/19 • Due 2/18/20
 Est PM EPDs: 11 -.35 70 98 .18 6 24 59 19 12.0
 Carcass: 34.7 -.31 .25 -.06 .80 133 73
 Pasture Sire: CCR Wichita 4069D from 6/26 to 7/18/19

Her dam, B101, has always been one of our favorites. She was an off-age female for us that Adam was able to show for 2 years with a lot of success. F141 is an ET heifer with that same eye appealing look. Will have a TJ Heisman calf at side by sale day. We have a lot of hope Heisman will be one of our go to heifer bulls this year.

**110 ES F74**

CE	BW	WW	YW	ADG	MCE	Milk	MWW	Stay	DOC	CW	YG	Marb	BF	REA	API	TI
10	1.8	73	101	.18	3	14	51	19	9.3	33.5	-.48	.18	-.089	1.11	136	75
		30						35		30		15		5	20	20

REG#3481790
 BD: 3/13/18

Hetero Black
Homo Polled
Purebred

Adj BW	Adj WW
89	607

TKCC Carver 65C
 ES B90
 WS Pilgrim H182U
 Ford RJ Dolly Y83
 Remington Lock N Load 54U
 EST51

AI Sire: JK High Point 745 on 5/9/19 • Due 2/16/20
 Est PM EPDs: 10 1.3 74 112 .24 4 19 56 16 12.75
 Carcass: 45.2 -.15 .37 -.02 .76 126 74
 Pasture Sire: CCR Wichita 4069D from 6/26 to 7/18/19

We really like the bottom side of the pedigree here, her grandam has been a donor for us for years but still managed to wean 8 natural calves with a WW ratio of 109. Then her dam, B90, is a full sister to the \$40,000 bull, ES Buckshot, and has a WW ratio of 104 on 4 calves. Bred to the JK Angus, High Point bull, their high seller in 2018.

111 ES F146REG#3481589 • BD: 2/11/18 • **Homo Black Homo Polled Purebred**

CE	BW	WW	YW	ADG	MCE	Milk	MWW	Stay	DOC	CW	YG	Marb	BF	REA	API	TI
13	1.3	69	99	.18	5	18	52	19	14.6	20.9	-.44	.06	-.092	.82	134	71
20								25	10						25	

Adj BW	Adj WW
78	616

AI Sire: TJ Heisman 388F on 5/11/19

Due 2/18/20

Est PM EPDs: 13 .25 75 109 .21 7 22 60 20 13.05

Carcass: 30.3 -.34 .26 -.07 .77 152 81

Pasture Sire: CCR Wichita 4069D from 6/26 to 7/18/19

HTP SVF In Dew Time
Welshs Dew It Right 067T
SVF/NJC Senerita N29
Remington Lock N Load 54U
ES A110
ESU56

An opportunity to own a heifer that is a full sister to last year's high selling bull. Her dam, A110, is securing herself as our go to donor having a great set of bulls last year and her sons this year will once again be featured lots. Feet, legs and udder are all strong qualities in this cow family.



ES FA110-4, Full Brother

**112 ES F88**

CE	BW	WW	YW	ADG	MCE	Milk	MWW	Stay	DOC	CW	YG	Marb	BF	REA	API	TI
11	2.2	71	93	.14	5	16	51	16	11.0	24.8	-.43	-.13	-.076	.94	113	65
35															25	

REG#3481655
BD: 3/16/18**Homo Black
Homo Polled
Purebred**

Adj BW	Adj WW
85	606

TKCC Carver 65C

ES W22

WS Pilgrim H182U

Ford RJ Dolly Y83

WS Independence T18

ESR53

Pasture Sire: CCR Wichita 4069D from 6/26 to 7/18/19

Est PM EPDs: 15 .45 72 101 .18 8 17 53 15 13.95

Carcass: 26.8 -.33 .09 -.06 .82 121 69

If you like longevity, her dam is a hard working 11 year old cow with a good udder and stands on a solid foot. These Carvers are long sided attractive cattle.

**113 ES F116**

CE	BW	WW	YW	ADG	MCE	Milk	MWW	Stay	DOC	CW	YG	Marb	BF	REA	API	TI
7	2.5	80	109	.18	2	17	57	13	10.9	37.1	-.34	.25	-.069	.87	115	75
5		30					35		25	25			30	10	30	

REG#3481867
BD: 4/4/18**Homo Black
Homo Polled
3/4 SM 1/4 AN**

Adj BW	Adj WW
93	640

TKCC Carver 65C

Miss Werning 315A

WS Pilgrim H182U

Ford RJ Dolly Y83

R&R Chamberlain X744

Miss Werning 9715T

AI Sire: TJ High Plains 986E on 5/9/19 • Due 2/16/20

Est PM EPDs: 11 1.5 78 111 .21 4 27 66 15 12.85

Carcass: 41.15 -.36 .35 -.08 .91 142 84

Pasture Sire: CCR Wichita 4069D from 6/26 to 7/18/19

This one is easy on the eyes, moderate and super attractive. Her dam was selected out of the W/C program as a bred heifer. We were impressed by her overall power and structural soundness. She is really hitting her stride with this bred heifer and a top end bull prospect in the sale ES G315A, Lot 13.



Miss Werning 315A, Dam

114 ES F47REG#3481666 • BD: 3/5/18 • **Homo Black Homo Polled 3/4 SM 1/4 AN**

CE	BW	WW	YW	ADG	MCE	Milk	MWW	Stay	DOC	CW	YG	Marb	BF	REA	API	TI
14	.7	82	122	.25	7	24	64	19	14.3	43.3	-.28	.49	-.042	.98	155	86
25		4	10	25		35	10	10	15	10		20		4	4	2

Adj BW	Adj WW
89	655

AI Sire: TJ High Plains 986E on 5/11/19

Due 2/18/20

Est PM EPDs: 14 .65 79 118 .25 7 29 69 19 14.75

Carcass: 43.85 -.33 .46 -.07 .98 163 89

Pasture Sire: CCR Wichita 4069D from 6/26 to 7/18/19



TJ Main Events 503B
 CDI Innovator 325D
 CDI Miss Shear Force 49U
 S A V 004 Predominant 4438
 ES A29
 ES X13

This Innovator heifer will stop you in your tracks. She's the kind we are proud to put the ES brand on. Tremendously bold made yet soft structured. Check out her growth EPDs and high API and TI. We used High Plains for a PB calf, but the mating possibilities are endless.

**115 ES F77**

CE	BW	WW	YW	ADG	MCE	Milk	MWW	Stay	DOC	CW	YG	Marb	BF	REA	API	TI
14	.8	84	126	.26	7	26	68	20	14.0	48.9	-.24	.26	-.055	.82	144	81
25		3	5	20		15	3	10	20	3				20	15	10

REG#3481768

BD: 3/14/18

Homo Black
Homo Polled
5/8 SM 3/8 AN

Adj BW	Adj WW
75	636

CDI Innovator 325D

ES X78

TJ Main Event 503B

CDI Ms. Shear Force 49U

S A V 8180 Traveler 004

ESP85

LOT 115A: HEIFER CALF AT SIDE

Sire: TJ Heisman 388F • BD: 2/6/20 • BW: 62

Est EPDs: 14 .05 82 123 .26 8 26 67 21 12.8

Carcass: 44.3 -.24 .36 -.05 .77 151 84

I would be totally shocked if she doesn't make a pretty good cow. Her dam is a big, high powered 004 cow with a good udder. Better yet, her grandam, P85, had a WW ratio of 112 on 11 calves, that's rock solid. No frills just get it done kind of cattle. Help yourself to some of the first Innovator bred to sell. His numbers just keep getting better.

**116 ES F62**

CE	BW	WW	YW	ADG	MCE	Milk	MWW	Stay	DOC	CW	YG	Marb	BF	REA	API	TI
16	-2.2	72	106	.21	7	28	64	18	12.7	20.1	-.49	.22	-.078	1.07	143	78
10		10	25	35		10	10	20	30		3			20	2	15

REG#3481627

BD: 3/11/18

Homo Black
Hetero Polled
1/2 SM 1/2 AN

Adj BW	Adj WW
73	584

TJ Main Event 503B

ES B10

Mr. NLC Upgrade U8676

TJ Miss New Day U14

Hooks Shear Force 38K

ES Z44

LOT 116A: HEIFER CALF AT SIDE

Sire: TJ High Plains 986E • BD: 2/8/20 • BW: 80

Est EPDs: 15 -.8 75 110 .22 7 31 68 19 13.95

Carcass: 32.5 -.44 .34 -.08 1.02 158 86

I would expect this low BW heifer with a big ribeye EPD to maintain her moderate stature. We feel her mating to High Plains for a PB calf ought to compliment her well. We will know by sale day as it should be running along-side, no more guesswork!

117 ES F31

REG#3481811 • BD: 2/10/18 • **Hetero Black Homo Polled 3/4 SM 1/4 AN**

Adj BW	Adj WW
87	691

AI Sire: TJ Heisman 388F on 5/11/19

Due 2/18/20

Est PM EPDs: 12 .05 79 117 .24 8 23 63 19 12.1

Carcass: 52.4 -.18 .38 -.05 .78 145 81

Pasture Sire: CCR Wichita 4069D from 6/26 to 7/18/19

CE	BW	WW	YW	ADG	MCE	Milk	MWW	Stay	DOC	CW	YG	Marb	BF	REA	API	TI
10	.8	79	117	.24	6	18	57	18	12.8	64.3	-.13	.28	-.035	.82	132	77
		10	15	35			35	30	30	1				20	35	20

Remington Lock N Load 54U
W/C Lock Down 206Z
G C F Miss New Level R206
CCR Drover 9094A
ES D106
ES A16

She is a real world, common sense female. She has a look that says I'm going to lay down and have a calf, bring it home in the fall and make your banker happy when it goes to the sale barn. Just had the conversation today how practical these Lock Down cattle are, he works great on heifers yet has as much to offer as any bull you would use on cows. Had a whopping WW Ratio of 115.



118 ES F46

CE	BW	WW	YW	ADG	MCE	Milk	MWW	Stay	DOC	CW	YG	Marb	BF	REA	API	TI
9	.8	72	108	.23	6	22	58	10	9.8	62.6	-.25	.09	-.049	1.08	105	69
		25	30				35			1				2		

REG#3481734
BD: 3/3/18

Homo Black Baldy
Hetero Polled
3/4 SM 1/4 AN

Adj BW	Adj WW
90	514

W/C Lock Down 206Z
ES D63
Remington Lock N Load 54U
G C F Miss New Level R206
LLSF Pays To Believe ZU194
ESU2

AI Sire: CDI Legendary 364D on 5/11/19 • Due 2/18/20
Est PM EPDs: 16 -2.95 67 99 .20 10 26 60 10 9.2
Carcass: 47.85 -.35 .16 -.06 1.10 133 78
Pasture Sire: CCR Wichita 4069D from 6/26 to 7/18/19

She is super attractive through her front one third. Lock Down has been a pleasant surprise for us, he was a high performance bull that ended up being a legitimate heifer bull.



119 ES F87

CE	BW	WW	YW	ADG	MCE	Milk	MWW	Stay	DOC	CW	YG	Marb	BF	REA	API	TI
12	.3	67	102	.22	5	28	62	17	10.8	34.6	-.42	.10	-.093	.91	122	69
		10	15	35			30	10		10				10	10	

REG#3481613
BD: 3/16/18

Homo Black
Homo Polled
3/4 SM 1/4 AN

Adj BW	Adj WW
88	627

ES Loaded BU56-1
ES Y4
Remington Lock N Load 54U
ESU56
CDI Ridgeline 32T
ES W34

LOT 119A: HEIFER CALF AT SIDE

Sire: TJ Heisman 388F • BD: 2/8/20 • BW: 75
Est EPDs: 13 -.2 74 111 .23 7 27 64 19 10.95
Carcass: 37.3 -.33 .28 -.07 .82 151 82

We don't have too many ES Loaded heifers to sell this year, but they sure have been popular in past sales being some of the high sellers in each of the last 2 years. They are long sided with a beautiful front end. Her dam can raise calves that are low birth weight then excel at weaning time with 7 calves ratioing 105 and 103 respectively.



120 ES F125REG#3481726 • BD: 4/20/18 • **Homo Black Hetero Polled 3/4 SM 1/4 AN**

Adj BW	Adj WW
90	616

LOT 120A: HEIFER CALF AT SIDE

Sire: TJ Heisman 388F • BD: 2/6/20 • BW: 80

Est EPDs: 11 1.15 77 116 .25 7 25 64 18 8.65

Carcass: 40.6 -.30 .33 -.06 .87 147 83

CE	BW	WW	YW	ADG	MCE	Milk	MWW	Stay	DOC	CW	YG	Marb	BF	REA	API	TI
8	3.0	73	113	.25	4	24	60	14	5.9	41.3	-.37	.20	-.070	1.01	115	70
		20	20	25		35	20			15	15		30	3		



W/C United 956Y
ES BX64
ES X64
ES Reloaded TR64
ES Y59
ESM15

I know her pedigree is not real flashy, but a good one is a good one and here's one we really appreciate for her tremendous spring of rib. I'm sure you'll agree she's a brood cow in the making. Bred to the Big Timber son, TJ Heisman.

**121 ES F127**

CE	BW	WW	YW	ADG	MCE	Milk	MWW	Stay	DOC	CW	YG	Marb	BF	REA	API	TI
14	.6	73	113	.25	6	21	57	17	9.5	45.7	-.30	.17	-.063	.92	129	73
		20	20	25		35	35	35		5	35		30	10		35

REG#3481626

BD: 4/24/18

Homo Black
Homo Polled
3/4 SM 1/4 AN

Adj BW	Adj WW
84	728

ES BX64 W/C United 956Y

ES X64

ES A10 Ellingson Legacy M229

ES Y22

LOT 121A: HEIFER CALF AT SIDE

Sire: TJ Frosty 318E • BD: 2/13/20 • BW: 69

Est EPDs: 15 -1.55 84 125 .26 7 21 63 17 11.9

Carcass: 48.9 -.23 .21 -.05 .80 140 82

She is 1 of 3 heifers we have in the offering that will have a TJ Frosty calf, the new upcoming bull that is creating a lot of excitement at Triangle J.

**122 ES F6**

CE	BW	WW	YW	ADG	MCE	Milk	MWW	Stay	DOC	CW	YG	Marb	BF	REA	API	TI
14	-.1	65	103	.24	6	21	53	17	3.7	38.3	-.32	.42	-.064	.89	143	75
		35		35				30		20	30	30	30	10	15	25

REG#3481835

BD: 1/28/18

Homo Black
Homo Polled
5/8 SM 3/8 AN

Adj BW	Adj WW
77	555

CLRS Conquest 634 C

K C F Bennett Absolute

Hooks Solemn 334S

ES D123

Remington Lock N Load 54U

HS Look At Me X381N

LOT 122A: HEIFER CALF AT SIDE

Sire: Hook's Encore 65E • BD: 2/3/20 • BW: 74

Est EPDs: 14 -.20 68 104 .23 8 22 56 17 9.9

Carcass: 29.45 -.43 .48 -.07 1.05 147 79

Study your lesson here, a solid set of numbers who's grandam is one of our older donors. Be sure to look up her maternal brother, GD123 (Lot 7). Full sibs to the D123 dam have been sale features in both the bull and heifer pens in past sales.

123 ES F15

REG#3481676 • BD: 2/4/18 • **Homo Black Homo Polled 3/4 SM 1/4 AN**

Adj BW	Adj WW
61	548

LOT 123A: BULL CALF AT SIDE

Sire: TJ Heisman 388F • BD: 2/7/20 • BW: 78
Est EPDs: 18 -1.15 74 112 .24 10 22 59 19 9.15
Carcass: 30.35 -.28 .50 -.05 .76 160 84

CE	BW	WW	YW	ADG	MCE	Milk	MWW	Stay	DOC	CW	YG	Marb	BF	REA	API	TI
21	-1.6	67	104	.23	11	19	52	17	7.3	20.9	-.33	.55	-.050	.80	162	82
1	15				3			35			25	10		20	2	5

K C F Bennett Absolute
CLRS Conquest 634 C
Hooks Solemn 334S
Hook's Bozeman 8B
ES D33
ES A110

Don't let this one slip through the cracks. Study her pedigree, her grandam is the good A110 donor. Her dam, D33 is a natural calf out of A110. Note her exceptional CE & BW EPDs which correlate into a high API. Her PB calf ought to be a good one.



124 ES F12

CE	BW	WW	YW	ADG	MCE	Milk	MWW	Stay	DOC	CW	YG	Marb	BF	REA	API	TI
12	-1.0	78	123	.28	9	25	65	18	10.8	44.3	-.30	.29	-.016	1.27	143	82
	20	10	10	10	15	25	10	20		10	35			1	15	10

REG#3481762
BD: 2/3/18

Hetero Black
Homo Polled
3/4 SM 1/4 AN

Adj BW	Adj WW
82	640

Hook's Beacon 56B
ES D75
Hooks Shear Force 38K
Hooks Zafirah 41Z
W/C United 956Y
ES X46

LOT 124A: BULL CALF AT SIDE

Sire: TJ Frosty 318E • BD: 2/11/20 • BW: 90
Est EPDs: 14 -2.35 87 131 .28 9 23 66 18 12.5
Carcass: 48.15 -.23 .29 -.03 .98 148 87

Sired by the number fixer Hook's Beacon and bred to TJ Frosty. The Frosty bulls were one of the most sought after sire groups in the recent Triangle J bull sale, seedstock producers selected the top end for future herd sires. The planned mating EPD profile will work for anyone.



125 ES F30

CE	BW	WW	YW	ADG	MCE	Milk	MWW	Stay	DOC	CW	YG	Marb	BF	REA	API	TI
9	.9	70	103	.20	6	10	46	16	9.4	21.7	-.22	.04	-.044	.51	113	65
		30														

REG#3481661
BD: 2/9/18

Homo Black
Homo Polled
5/8 SM 3/8 AN

Adj BW	Adj WW
85	579

CCR Santa Fe 9349Z
ES D26
S D S Graduate 006X
CCR Ms. Apple 9332W
Connealy Capitalist 028
ES B72

AI Sire: TJ Heisman 388F on 6/13/19 • Due 3/23/20
Est PM EPDs: 12 .1 76 111 .22 8 18 56 19 10.35
Carcass: 30.55 -.23 .25 -.05 .61 136 76
Pasture Sire: CCR Wichita 4069D from 6/26 to 7/18/19

A little larger framed heifer mated to TJ Heisman. We are as excited as any to see what these Heisman calves can do. He was our choice for heifers using the next generation of Big Timber.



126 ES F40REG#3481806 • BD: 2/21/18 • **Homo Black Homo Polled 3/4 SM 1/4 AN**

CE	BW	WW	YW	ADG	MCE	Milk	MWW	Stay	DOC	CW	YG	Marb	BF	REA	API	TI
12	.4	70	101	.19	7	8	43	15	10.9	31.6	-.51	-.08	-.094	1.15	119	68
		30									2		10	1		

Adj BW	Adj WW
75	545

AI Sire: TJ Heisman 388F on 5/11/19

Due 2/18/20

Est PM EPDs: 13 -.15 76 110 .22 8 17 55 18 11.2

Carcass: 35.65 -.37 .20 -.07 .93 145 80

Pasture Sire: CCR Wichita 4069D from 6/26 to 7/18/19



S D S Graduate 006X
CCR Santa Fe 9349Z
CCR Ms. Apple 9332W
Remington Lock N Load 54U
ES D101
ES X93

This homo black and polled Santa Fe daughter has some pretty solid genetics. The top has Ms. Apple 9332W and Lock N Load on the bottom. Her dam is a full sister to the \$22,000 heifer purchased by John Christensen several years ago, and now is a donor at Hilltop Simmentals.

**127 ES F52**

CE	BW	WW	YW	ADG	MCE	Milk	MWW	Stay	DOC	CW	YG	Marb	BF	REA	API	TI
10	.9	66	94	.17	7	18	51	18	11.8	34.3	-.30	.21	-.066	.76	134	72
		30				25			35	25		15		25	35	

REG#3481773

BD: 3/7/18

Homo Black
Homo Polled
Purebred

Adj BW	Adj WW
80	541

CCR Santa Fe 9349Z

ES D81

S D S Graduate 006X
CCR Ms. Apple 9332W
CCR Drover 9094A
ES A15

AI Sire: TJ Teardrop 783F on 5/9/19 • Due 2/16/20

Est PM EPDs: 14 .0 73 109 .22 7 28 64 19 14.05

Carcass: 37.6 -.32 .17 -.08 .77 146 78

Pasture Sire: CCR Wichita 4069D from 6/26 to 7/18/19

These Santa Fe daughters are no nonsense cattle that should make hard working cows. May be a rare chance to buy a heifer with a TJ Teardrop calf at side.

**128 ES F75**

CE	BW	WW	YW	ADG	MCE	Milk	MWW	Stay	DOC	CW	YG	Marb	BF	REA	API	TI
16	-1.0	71	111	.26	6	23	58	17	11.2	35.2	-.46	-.04	-.075	1.18	135	74
		10				35	35			20				2	25	25

REG#3481677

BD: 3/13/18

Hetero Black
Homo Polled
Purebred

Adj BW	Adj WW
72	523

BCLR Cash Flow C820

ES Z33

CCR Wide Range 9005A
BCLR Miss Monica U820
Remington Lock N Load 54U
ES W11

AI Sire: TJ Frosty 318E on 5/11/19 • Due 2/18/20

Est PM EPDs: 16 -2.35 83 126 .27 8 22 63 17 12.5

Carcass: 44.0 -.31 .12 -.06 .94 138 81

Pasture Sire: CCR Wichita 4069D from 6/26 to 7/18/19

If you follow our sales from year to year, you'll know I was very high on the Cash Flow bulls in last year's sale. They were structurally impeccable with a big, bold rib shape, the kind that ought to work well in a commercial setting. Be sure to find her maternal brother, the GZ33 Proclamation bull Lot 4.

129 ES F138

REG#3481574 • BD: 2/11/18 • **Hetero Black Homo Polled 1/2 SM 1/2 AN**

CE	BW	WW	YW	ADG	MCE	Milk	MWW	Stay	DOC	CW	YG	Marb	BF	REA	API	TI
14	.1	53	75	.14	4	18	45	15	8.1	23.5	-.17	.38	-.032	.47	129	65
30												35				

Adj BW	Adj WW
88	610

LOT 129A: HEIFER CALF AT SIDE

Sire: CCR Boulder 1339A • BD: 2/14/20 • BW: 74
Est EPDs: 14 -.8 60 91 .19 6 20 50 16 12.2
Carcass: 26.4 -.30 .52 -.05 .78 144 75

O C C Legend 616L
B C Lookout 7024
Gibbet Hill Mignonne E37
CNS Dream On L186
Frankes/MPC Night Dreams
HHSF Black Glitter

A time-tested pedigree that works every time. Look at Lots 35 & 36 (ES GB101-1, ES GB101-3), Hook's Eagle sons, their mother is a full sister to ES F138, and you will know why you need to own this female. F138's full brothers were admired by many two years ago.



130 ES F60

CE	BW	WW	YW	ADG	MCE	Milk	MWW	Stay	DOC	CW	YG	Marb	BF	REA	API	TI
6	2.2	70	110	.25	3	25	60	16	11.6	62.9	-.14	.29	-.056	.69	120	70
30		25	25			25	20			1						

REG#3481808
BD: 3/10/18

**Homo Black
Hetero Polled
1/2 SM 1/2 AN**

Adj BW	Adj WW
97	646

Prairie Pride Next Step 2036
ES Z103
SydGen 928 Destination
Flying V Miss Pride 426
R&R Chamberlain X744
ESR55
Pasture Sire: CCR Wichita 4069D from 6/26 to 7/18/19
Est PM EPDs: 12 .45 72 110 .24 7 21 57 15 14.4
Carcass: 45.85 -.19 .31 -.05 .69 130 75

Here's a long sided heifer with a very attractive front end. We have bred her dam to an Angus bull 4 out of 5 years. The calves seem to get better each year with this one having a WW ratio of 108.



131 ES F28

CE	BW	WW	YW	ADG	MCE	Milk	MWW	Stay	DOC	CW	YG	Marb	BF	REA	API	TI
11	.3	70	96	.17	4	15	50	14	11.5	31.3	-.34	.12	-.091	.65	126	73
35	20								35			25				30

REG#3481708
BD: 2/9/18

**Hetero Black
Homo Polled
Purebred**

Adj BW	Adj WW
71	613

WLE Uno Mas X549
ES D49
CNS Dream On L186
Shawnee Miss 770P
CCR Spartan 9124A
ES X57
AI Sire: TJ Teardrop 783F on 5/12/19 • Due 2/19/20
Est PM EPDs: 15 -.35 75 110 .22 6 26 63 18 13.85
Carcass: 35.8 -.33 .12 -.09 .70 131 74
Pasture Sire: CCR Wichita 4069D from 6/26 to 7/18/19

This Uno Mas heifer is a little more skeletal framed and bone mass than some of her counter parts. Her PB Teardrop calf should be a valuable commodity out of the 38W donor who now resides in North Dakota owned by Doug Bichler and Chris Nicholson.



**132 ES F112**

CE	BW	WW	YW	ADG	MCE	Milk	MWW	Stay	DOC	CW	YG	Marb	BF	REA	API	TI
10	2.9	73	108	.21	6	21	58	15	12.2	38.1	-.37	.08	-.099	.76	111	67
		20	30				30			20	15		10	25		

REG#3481603
BD: 4/2/18

Homo Black
Homo Polled
3/4 SM 1/4 AN

Adj BW	Adj WW
88	639

OMF/DK Cruise Control CCR Cowboy Cut 5048Z
OMF/KB Finesse Y9
ES Z1 TJ Sharper Image 809U
ES X32

AI Sire: TJ Teardrop 783F on 5/11/19 • Due 2/18/20
Est PM EPDs: 14 1.0 77 116 .24 6 29 67 18 14.3
Carcass: 38.8 -.36 .10 -.09 .77 128 74
Pasture Sire: CCR Wichita 4069D from 6/26 to 7/18/19

This is the only Cruise Control daughter we have in the offering; she stems back to a high performance cow family. Her dam has weaned 4 calves with a WW ratio of 110. Be one of the 1st to own a female with a TJ Teardrop calf at side.

**133 ES F107**

CE	BW	WW	YW	ADG	MCE	Milk	MWW	Stay	DOC	CW	YG	Marb	BF	REA	API	TI
-3	6.6	69	131	.28	-3	13	56	21	10.3	52.8	-.18	.14	-.032	.88	108	68
		2	3	10				3		2				10		

REG#3481620
BD: 3/22/18

Hetero Black
Homo Polled 5/8 SM
5/16 AN 1/16 AR

Adj BW	Adj WW
122	668

TJ Power Grid 363Y S A V Net Worth 4200
TJ 15T
ES C7 TNT Axis X307
ES Y53

LOT 133A: HEIFER CALF AT SIDE
Sire: CDI Legendary 364D • BD: 2/12/20 • BW: 88
Est EPDs: 10 -.1 74 110 .23 5 22 59 15 9.5
Carcass: 43.7 -.32 .19 -.05 1.01 123 74

A real solid female here, sensibly made with a lot of rib shape. We are very excited to see what CDI Legendary can do. If he does what we hope, he will be a mainstay in our heifer program for years to come.

134 ES F1

REG#3481822 • BD: 1/24/18 • **Red Homo Polled 1/2 SM 7/16 AR 1/16 AN**

CE	BW	WW	YW	ADG	MCE	Milk	MWW	Stay	DOC	CW	YG	Marb	BF	REA	API	TI
12	-.6	72	109	.23	4	20	56	13	15.8	38.1	-.04	.16	-.005	.47	119	71
		25	30						5	20						

Adj BW	Adj WW
64	539

AI Sire: CDI Perspective 238A on 5/11/19

Due 2/18/20
Est PM EPDs: 15 -2.1 71 105 .21 6 22 57 15 13.2
Carcass: 38.05 -.16 .16 -.04 .61 128 73
Pasture Sire: CCR Wichita 4069D from 6/26 to 7/18/19



Hooks Trinity 9T
Leachman Cadillac L025A
Rempe Stabilizer YD032
ES ZX75
ES D111
EIR X226

She is one of our favorite red breds. High performance with plenty of body mass. Her dam is a good uddered female that has a bull in the offering as Lot 94, ES GD111, that is super stout with a big rear end. I would expect this one to have a few herd bulls in her future.

Red Females

135 ES F25

REG#3481788 • BD: 2/9/18 • Red Homo Polled 1/2 SM 7/16 AR 1/16 AN

Adj BW	Adj WW
96	655

LOT 135A: HEIFER CALF AT SIDE

Sire: CDI Perspective 238A • BD: 2/12/20 • BW: 86
Est EPDs: 13 -.85 76 114 .24 6 20 58 16 13.6
Carcass: 41.9 -.21 .23 -.04 .77 133 77

CE	BW	WW	YW	ADG	MCE	Milk	MWW	Stay	DOC	CW	YG	Marb	BF	REA	API	TI
9	1.9	83	129	.29	4	17	58	14	16.2	46.0	-.13	.29	-.011	.79	125	78
		3	4	10			30		4	5				20		15

Hooks Trinity 9T
Leachman Cadillac L025A
Rempe Stabilizer YD032
ES Authorized BT202-2
ES D89
ES A17

Should be a replacement female deluxe here. Her dam and grandam both have awesome udders. She is the kind of heifer you would love to have a whole pasture of right along the highway when the neighbors drive by. She had a WW ratio of 109.



136 ES F69

REG#3481861 • BD: 3/13/18 • Red Homo Polled 1/2 SM 1/2 AR

Adj BW	Adj WW
89	639

Pasture Sire: CCR Wichita 4069D from 6/26 to 7/18/19
Est PM EPDs: 15 -.45 77 115 .24 9 14 53 14 16.3
Carcass: 38.4 -.20 .29 -.04 .68 134 78

CE	BW	WW	YW	ADG	MCE	Milk	MWW	Stay	DOC	CW	YG	Marb	BF	REA	API	TI
12	.4	82	123	.25	7	11	52	14	15.6	48.1	-.17	.27	-.047	.66	129	79
		4	10	25					10	4						15

WS All-Around Z35
WS All Aboard B80
WS Little Sister W37
LCB Hoss A444N
EIR T217
EIR P213

I'm always a sucker for a redhead and this gal is solid. If all your cows, red or black, looked like this you'd want to tip your hat back and pop your chest out as the neighbors drove by. She has a WW ratio of 107 and her dam has a WW ratio of 103 on six calves.



137 ES F21

REG#3481738 • BD: 2/7/18 • Red Homo Polled 3/4 SM 1/4 AR

Adj BW	Adj WW
66	540

AI Sire: CDI Legendary 364D on 5/11/19

Due 2/18/20

Est PM EPDs: 21 -5.15 63 91 .18 11 27 59 14 10.1

Carcass: 36.95 -.42 .18 -.08 1.02 151 80

Pasture Sire: CCR Wichita 4069D from 6/26 to 7/18/19

CE	BW	WW	YW	ADG	MCE	Milk	MWW	Stay	DOC	CW	YG	Marb	BF	REA	API	TI
19	-3.6	64	91	.17	10	23	55	19	10.8	39.9	-.38	.12	-.084	.92	142	72
2	3				5			15		15	15		15	10	15	



Hook's Xpectation 36X
 CDI Perspective 238A
 CDI Ms. Trump 101Y
 WS Beef King W107
 ES D65
 EIR Y206

They tell me the Perspectives make some nice cows, so far, we like what we see. Bred to the hetero black bull, CDI Legendary, by sale day we will know if it's a black or red calf. No matter the color, it ought to be a good one.

**138 ES F76**

CE	BW	WW	YW	ADG	MCE	Milk	MWW	Stay	DOC	CW	YG	Marb	BF	REA	API	TI
7	2.7	89	136	.29	2	17	61	13	15.8	50.8	-.40	.18	-.090	1.07	127	84
		2	2	4			20		3	1		15		10		2

REG#3481727

BD: 3/13/18

Red
 Homo Polled
 Purebred

Adj BW	Adj WW
94	665

WS All Aboard B80

ES Z59

WS All-Around Z35

WS Little Sister W37

NF Trump S582

EST45

AI Sire: GW Major Move 590E on 6/14/19 • Due 3/24/20

Est PM EPDs: 8 2.15 89 137 .30 3 18 62 16 17.4

Carcass: 48.5 -.35 .18 -.07 1.07 125 80

Pasture Sire: CCR Wichita 4069D from 6/26 to 7/18/19

Here's a beautiful red bred to build a program around. Phenotypically she's spot on, on paper she's a high WW & YW heifer that ratioed 111 for WW. Both her dam and grandam are nice looking cows that have raised some good ones in both the bull and heifer pen. Bred to the popular Major Move that sold in Gateway's 2018 sale.

**139 ES F118**

CE	BW	WW	YW	ADG	MCE	Milk	MWW	Stay	DOC	CW	YG	Marb	BF	REA	API	TI
11	.4	69	107	.24	6	29	63	21	10.7	32.0	-.05	.17	-.015	.34	133	70
		35	35	35		10	10	2							35	

REG#3481865

BD: 4/4/18

Red
 Homo Polled
 1/2 SM 1/2 AR

Adj BW	Adj WW
77	550

RFS Bulletproof B42

EIR X229

GW Redestined 642X

RFS Miss Z119

OHRR Dakota Copper 29K

EIR M211

LOT 139A: HEIFER CALF AT SIDE

Sire: Leachman Cadillac L025A • BD: 2/11/20 • BW: 78

Est EPDs: 13 -.45 72 114 .26 6 26 62 16 14.25

Carcass: 31.7 -.06 .22 -.01 .39 125 72

She would get our approval if your objective is to raise high performance beef bulls. Our Bulletproof bulls were very well received by the commercial cattleman last year. She has the look that says, "bring it on, I'll make it happen".

140 ES F84

REG#3481830 • BD: 3/15/18 • **Red Star Homo Polled Purebred**

CE	BW	WW	YW	ADG	MCE	Milk	MWW	Stay	DOC	CW	YG	Marb	BF	REA	API	TI
9	3.4	83	115	.20	6	14	55	18	12.4	41.6	-.59	-.07	-.153	1.07	121	73
		5	20		30			35	25	10	3		1	10		30

Adj BW	Adj WW
91	673

AI Sire: CDI Legendary 364D on 5/8/19

Due 2/15/20

Est PM EPDs: 16 -1.6 72 102 .19 9 22 58 14 10.7

Carcass: 37.6 -.52 .09 -.11 1.10 136 78

Pasture Sire: CCR Wichita 4069D from 6/26 to 7/18/19

R Plus Hard Rock 145X
Ellingson Complete A358
Ellingson Ms. Amigo X5
WS Beef King W107
ES A118
Ford Farms Stacy

We used the Ellingson Complete bull to incorporate some outcross genetics along with adding some performance. This star headed red heifer did exactly that ratioing 112 for WW. So, if you're looking for a heifer with a tic more frame and stretch, look her up.



Red Angus Females

141 EIR F213

REG#3976064 • BD: 2/10/18 • **Purebred Red Angus**

CE	BW	WW	YW	Milk	Stay	MA	RE	BF
15	-4.1	44	69	27	16	.44	-.02	.05
18	7			20				

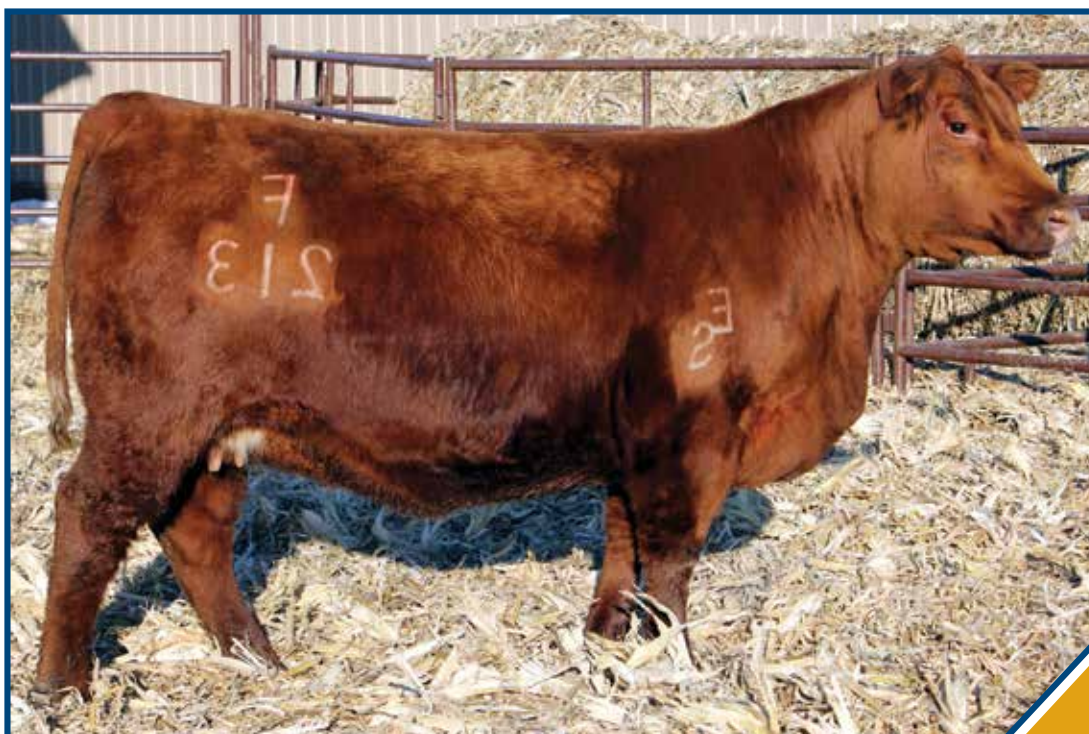
Adj BW	Adj WW
60	557

LOT 141A: BULL CALF AT SIDE

Sire: Bieber Make Mimi 7249 • BD: 2/11/20 • BW: 68

LSF Takeover 9943W
Brown AA Sensational B5147
Brown Ms. Destination T7634
Glacier Chateau 744
EIR T212
EIR P211

Here's a pair of heifers, F213 (Lot 141) and F216 (Lot 142), that are moderate framed and super thick, much like their donor dam, T212. Not only has T212 been a great donor but she has raised 9 natural calves with a WW ratio of 105. We happen to have a little Make Mimi semen in the tank yet and both are bred that way as we have always liked our Make Mimi daughters. So here they are, the choice is yours, but maybe the smart thing to do is take them both home. It will be fun to see which way the new owners decide to breed them, they can go a lot of different directions.



142 EIR F216

REG#3976052 • BD: 2/7/18 • Purebred Red Angus

Adj BW	Adj WW
52	556

CE	BW	WW	YW	Milk	Stay	MA	RE	BF
15	-4.1	44	69	27	16	.44	-.02	.05
18	7			20				

LOT 142A: BULL CALF AT SIDE

Sire: Bieber Make Mimi 7249 • BD: 2/12/20 • BW: 77



LSF Takeover 9943W
Brown AA Sensational B5147
Brown Ms. Destination T7634
Glacier Chateau 744
EIR T212
EIR P211

LIVE BIDDING AT
DVAuction
Broadcasting Real-Time Auctions
**143 EIR F211**
 REG#3976134
BD: 3/19/18
Purebred Red
Angus

Adj BW	Adj WW
87	539

CE	BW	WW	YW	Milk	Stay	MA	RE	BF
8	.1	68	103	23	17	.49	-.10	.02
		12	22			28		

Bieber Spartacus A193

EIR X226

 Bieber Rouse Samurai X22
Bieber Tilly 233U
Majestic Lightning 717 SGMR
EIR S200

AI Sire: WS All Aboard B80 on 5/11/19 • Due 2/18/20
Pasture Sire: CCR Wichita 4069D from 6/26 to 7/18/19

A striking Red Angus heifer with a little twist, bred to WS All Aboard, I always like adding a little Simmy to the Red Angus, it makes for a very sellable product. Then using a bull like All Aboard that not only adds phenotype but has an awesome EPD profile to back it up.

**144 EIR F205**
 REG#3976082
BD: 3/11/18
Purebred Red
Angus

Adj BW	Adj WW
84	585

CE	BW	WW	YW	Milk	Stay	MA	RE	BF
8	2.1	71	118	20	16	.45	.08	-.00
		6	4			34	35	6

PIE The Cowboy Kind 343

EIR U204

 BUF CRK The Right Kind U199
PIE Cascade 561
Bieber Make Mimi 7249
EIR S220
Pasture Sire: CCR Wichita 4069D from 6/26 to 7/18/19

Sired by The Cowboy Kind, he was a high seller at Pieper Red Angus several years ago and the semen was locked up except for a handful of packages that were sold. We've been using him ever since and have sold several full brothers in past sales.



DVAuction

Broadcasting Real-Time Auctions

CAN'T MAKE THE SALE?
Bid from home with DV Auction's FREE
"real-time" internet bidding service.

Buying online is as easy as 1, 2, 3...

1. Create an account at www.dvauction.com under the "register" tab.
2. Apply for bidding approval by clicking on the "details" tab at least **24 hours** prior to the auction. A DV representative will notify you once you have been approved.
3. Tune in for the sale and make your purchases!

After the sale, contact the sale manager or owner to arrange transportation and payment. **High speed internet is required for successful bidding.** Be sure to check the lag-time monitor in the top left corner to ensure real-time broadcasts.

Proxy Bidding: If you can't make time to watch the sale, register a proxy bid and let our system represent your bid while you're away. Look for the "proxy bid" tab on the auction listing, and fill in your maximum bids. We'll handle the rest!

Having Troubles? During the auction, you can type a message to the operator at any time for assistance. Our full-time support team can also always be reached at 402-474-5557.



BREED AVERAGES FOR EPDs:

PUREBRED SIMMENTAL

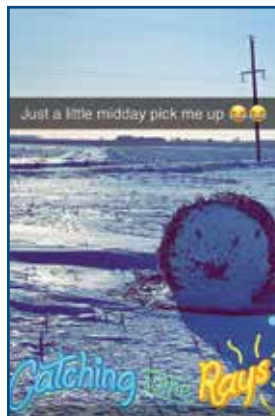
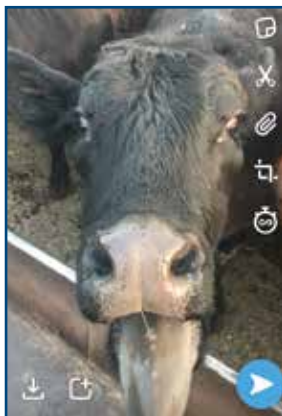
CE	BW	WW	PWG	YW	MCE	Milk	MWW	Stay	DOC	CW	YG	Marb	BF	REA	API	TI
10	1.8	68	.2	101	5	22	56	17	10.5	28.3	-.46	.01	-.11	.82	124	69

HYBRID SIMMENTAL

CE	BW	WW	PWG	YW	MCE	Milk	MWW	Stay	DOC	CW	YG	Marb	BF	REA	API	TI
12	.60	65	.21	99	6	22	54	15	11.2	29.5	-.23	.28	-.04	.62	124	69

RED ANGUS

CED	BW	WW	YW	Milk	Stay	Marb
12	-1.3	59	93	23	16	0.40



Sale Notes





Eberspacher
ENTERPRISES INC.
2904 Co Rd 6, Marshall, MN 56258

First Class Mail: Time Dated Material!

Presorted
First Class
US Postage
PAID
SlateGroup



Bull & Female Sale

JOIN US! FRIDAY, MARCH 6TH • 1:00 PM
AT THE EICHACKER SIMMENTAL FARM • SALEM, SD

2 0 2 0